



TEST REPORT IEC 60950-1 Information technology equipment – Safety – Part 1: General requirements	
Report Reference No.	T1405135-421
Tested by (printed name and signature)	Cheryl Zhang <i>Cheryl Zhang</i>
Approved by (printed name and signature)	Star Gu <i>Star Gu</i>
Date of issue.....	August 11, 2014
Testing Laboratory Name	Cerpass Technology(Suzhou) Co., Ltd.
Address	No.66, Tangzhuang Road, Suzhou Industrial Park, Jiangsu, China.
Applicant's name	Zhejiang Dahua Vision Technology Co., Ltd.
Address	The 1st Floor, Building F, No.1199 Bin'an Road, Changhe Street, Binjiang District, Hangzhou, P.R. China.
Test specification:	
Standard.....	IEC 60950-1:2005 (2nd Edition); Am 1:2009 and/or EN 60950-1:2006 + A11:2009 + A1:2010 + A12:2011
Test procedure	Service of CE Marking in LVD
Non-standard test method.....	N/A
Test item description	IP Camera
Trade Mark.....	None
Manufacturer	Zhejiang Dahua Vision Technology Co., Ltd. The 1st Floor, Building F, No.1199 Bin'an Road, Changhe Street, Binjiang District, Hangzhou, P.R. China.
Model/Type reference	1): IPC-HDB5100-Mercury, and DH-IPC-HDB5100-Mercury; 2): IPC-HDBW5100-Mercury, and DH-IPC-HDBW5100-Mercury; 3): IPC-HDB5200-Mercury, DH-IPC-HDB5200-Mercury, IPC-HDB5300-Mercury, and DH-IPC-HDB5300-Mercury; 4): IPC-HDBW5200-Mercury, DH-IPC-HDBW5200-Mercury, IPC-HDBW5300-Mercury, and DH-IPC-HDBW5300-Mercury; 5): IPC-HDB5202-Mercury, DH-IPC-HDB5202-Mercury, IPC-HDB5302-Mercury, and DH-IPC-HDB5302-Mercury; 6): IPC-HDBW5202-Mercury, DH-IPC-HDBW5202-Mercury, IPC-HDBW5302-Mercury, and DH-IPC-HDBW5302-Mercury.
Ratings	Input: See Page 3 and 4.

**Particulars: test item vs. test requirements**

Equipment mobility.....	Stationary Equipment
Connection to the mains	Not directly connected to the mains
Operating condition.....	Continuous
Access location	Operator accessible
Over voltage category (OVC)	N/A
Mains supply tolerance (%) or absolute mains supply values	N/A
Tested for IT power systems	N/A
IT testing, phase-phase voltage (V)	N/A
Class of equipment	Class III
Considered current rating (A)	N/A
Pollution degree (PD)	PD2
IP protection class	IPX0
Altitude during operation (m)	Up to 2000 m
Altitude of test laboratory (m)	Up to 2000 m
Mass of equipment (kg)	Rough 1.148 kg

Possible test case verdicts:

- test case does not apply to the test object : N/A
- test object does meet the requirement..... : P (Pass)
- test object does not meet the requirement..... : F (Fail)

Testing

Date of receipt of test item	July 25 , 2014
Date(s) of performance of tests	July 25 , 2014 to August 01, 2014

General remarks:

The test results presented in this report relate only to the object tested.

This report shall not be reproduced, except in full, without the written approval of the Issuing testing laboratory.

"(see Enclosure #)" refers to additional information appended to the report.

"(see appended table)" refers to a table appended to the report.

Throughout this report a point is used as the decimal separator.

Factor(ies):

Zhejiang Dahua Vision Technology Co., Ltd.

Address: The 1st Floor, Building F, No.1199 Bin'an Road, Changhe Street, Binjiang District, Hangzhou, P.R. China.

**General product information:**

1. The equipment is an IP Camera. All electrical components are mounted on V-1 PCB and housed in plastic enclosure and metal enclosure fixed by screws.
2. See below table for the models difference:

Model	Input Rating	IR Function Board	remote motorized focus function	Note
IPC-HDBW5302-Mercury, DH-IPC-HDBW5302-Mercury	12V $\overline{\text{---}}$, 0.58A or 24V \sim , 0.29A, 50Hz or POE 48V $\overline{\text{---}}$, 200mA	Yes	Yes	These models are similar except for model designation and enclosure logo.
IPC-HDB5302-Mercury, DH-IPC-HDB5302-Mercury	12V $\overline{\text{---}}$, 0.42A or 24V \sim , 0.21A, 50Hz or POE 48V $\overline{\text{---}}$, 160mA	No	Yes	These models are similar except for model designation and enclosure logo.
IPC-HDBW5300-Mercury, DH-IPC-HDBW5300-Mercury	12V $\overline{\text{---}}$, 0.58A or 24V \sim , 0.29A, 50Hz or POE 48V $\overline{\text{---}}$, 120mA	Yes	No	These models are similar except for model designation and enclosure logo.
IPC-HDB5300-Mercury, DH-IPC-HDB5300-Mercury	12V $\overline{\text{---}}$, 0.42A or 24V \sim , 0.21A, 50Hz or POE 48V $\overline{\text{---}}$, 72mA	No	No	These models are similar except for model designation and enclosure logo.
IPC-HDBW5202-Mercury, DH-IPC-HDBW5202-Mercury	12V $\overline{\text{---}}$, 0.58A or 24V \sim , 0.29A, 50Hz or POE 48V $\overline{\text{---}}$, 200mA	Yes	Yes	These models are similar except for model designation and enclosure logo.
IPC-HDB5202-Mercury, DH-IPC-HDB5202-Mercury	12V $\overline{\text{---}}$, 0.42A or 24V \sim , 0.21A, 50Hz or POE 48V $\overline{\text{---}}$, 160mA	No	Yes	These models are similar except for model designation and enclosure logo.
IPC-HDBW5200-Mercury, DH-IPC-HDBW5200-Mercury	12V $\overline{\text{---}}$, 0.58A or 24V \sim , 0.29A, 50Hz or POE 48V $\overline{\text{---}}$, 120mA	Yes	No	These models are similar except for model designation and enclosure logo.
IPC-HDB5200-Mercury, DH-IPC-HDB5200-Mercury	12V $\overline{\text{---}}$, 0.42A or 24V \sim , 0.21A, 50Hz or POE 48V $\overline{\text{---}}$, 72mA	No	No	These models are similar except for model designation and enclosure logo.
IPC-HDBW5100-Mercury, DH-IPC-	12V $\overline{\text{---}}$, 0.42A or 24V \sim , 0.21A,	Yes	No	These models are similar



HDBW5100-Mercury	50Hz or POE 48V $\overline{\text{---}}$, 120mA			except for model designation and enclosure logo.
IPC-HDB5100-Mercury, DH-IPC-HDB5100-Mercury	12V $\overline{\text{---}}$, 0.25A or 24V \sim , 0.13A, 50Hz or POE 48V $\overline{\text{---}}$, 72mA	No	No	These models are similar except for model designation and enclosure logo.

1) Model IPC-HDBW5302-Mercury is identical to model IPC-HDBW5202-Mercury except model designation, camera lens and sensor board.

2) Models IPC-HDBW5302-Mercury is identical to model IPC-HDBW5100 except model designation, input rating, camera lens, sensor board, and supporting remote motorized focus function.

3. All ports complied with limited power source, see appended table 2.5.

4. The equipment is supplied by approved external power adapter, and the detailed information refers to table 1.5.1. And this equipment supports POE too.

Please note: Don't connect these power supplying sources to the device at the same time.

5. The external power adapter is evaluated again with the EUT at the maximum operation temperature as 60 degree C, see appended table 4.5 for details.

6. The product has been evaluated at wall and ceiling mounting means.

7. Unless otherwise indicated, all tests were conducted on IPC-HDBW5302-Mercury, IPC-HDBW5202-Mercury and IPC-HDBW5100-Mercury to represent the other similar models.

Other comments:

1. The product was submitted and tested for use at the maximum ambient temperature (Tma) permitted by the manufacturer's specification of: 60 degree C.

Copy of marking plate:

The following label is only format show.

<Representative>

IP CAMERA

MODEL:IPC-HDB5100-Mercury

INPUT:12V $\overline{\text{---}}$,0.25A/24V \sim ,0.13A,50Hz/

POE:48V $\overline{\text{---}}$, 72mA

P/N:1.0.01.04.10230



MAC: AA:BB:CC:DD:EE:FF



S/N: PZC4AW00300001

ZHEJIANG DAHUA VISION TECHNOLOGY.,LTD.



MADE IN CHINA

IP CAMERA

MODEL:IPC-HDB5200-Mercury

INPUT:12V $\overline{\text{---}}$,0.42A/24V \sim ,0.21A,50Hz/

POE:48V $\overline{\text{---}}$, 72mA

P/N:1.0.01.04.10234



MAC: AA:BB:CC:DD:EE:FF



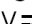

S/N: PZC4AW00700001

ZHEJIANG DAHUA VISION TECHNOLOGY.,LTD.



MADE IN CHINA

**IP CAMERA**

MODEL:IPC-HDB5202-Mercury
INPUT:12V ,0.42A/24V~,0.21A,50Hz /
POE:48V ,160mA

P/N:1.0.01.04.10235



MAC: AA:BB:CC:DD:EE:FF




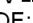
S/N: PZC4AW00800001

ZHEJIANG DAHUA VISION TECHNOLOGY.,LTD.



MADE IN CHINA

IP CAMERA

MODEL:IPC-HDB5300-Mercury
INPUT:12V ,0.42A/24V~,0.21A,50Hz /
POE:48V ,72mA

P/N:1.0.01.04.10239



MAC: AA:BB:CC:DD:EE:FF





S/N: PZC4AW01200001

ZHEJIANG DAHUA VISION TECHNOLOGY.,LTD.



MADE IN CHINA

IP CAMERA

MODEL:IPC-HDB5302-Mercury
INPUT:12V ,0.42A/24V~,0.21A,50Hz /
POE:48V ,160mA

P/N:1.0.01.04.10240



MAC: AA:BB:CC:DD:EE:FF



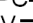
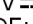
S/N: PZC4AW01300001

ZHEJIANG DAHUA VISION TECHNOLOGY.,LTD.



MADE IN CHINA

IP CAMERA

MODEL:IPC-HDBW5100-Mercury
INPUT:12V ,0.42A/24V~,0.21A,50Hz /
POE:48V ,120mA

P/N:1.0.01.04.10228



MAC: AA:BB:CC:DD:EE:FF





S/N: PZC4AW00100001

ZHEJIANG DAHUA VISION TECHNOLOGY.,LTD.



MADE IN CHINA

IP CAMERA

MODEL:IPC-HDBW5200-Mercury
INPUT:12V ,0.58A/24V~,0.29A,50Hz /
POE:48V ,120mA

P/N:1.0.01.04.10232



MAC: AA:BB:CC:DD:EE:FF



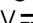

S/N: PZC4AW00500001

ZHEJIANG DAHUA VISION TECHNOLOGY.,LTD.



MADE IN CHINA

IP CAMERA

MODEL:IPC-HDBW5202-Mercury
INPUT:12V ,0.58A/24V~,0.29A,50Hz /
POE:48V ,200mA

P/N:1.0.01.04.10233



MAC: AA:BB:CC:DD:EE:FF



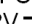

S/N: PZC4AW00600001

ZHEJIANG DAHUA VISION TECHNOLOGY.,LTD.



MADE IN CHINA

IP CAMERA

MODEL:IPC-HDBW5300-Mercury
INPUT:12V ,0.58A/24V~,0.29A,50Hz /
POE:48V ,120mA

P/N:1.0.01.04.10236



MAC: AA:BB:CC:DD:EE:FF



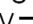

S/N: PZC4AW00900001

ZHEJIANG DAHUA VISION TECHNOLOGY.,LTD.



MADE IN CHINA

IP CAMERA

MODEL:IPC-HDBW5302-Mercury
INPUT:12V ,0.58A/24V~,0.29A,50Hz /
POE:48V ,200mA

P/N:1.0.01.04.10237



MAC: AA:BB:CC:DD:EE:FF



S/N: PZC4AW01000001

ZHEJIANG DAHUA VISION TECHNOLOGY.,LTD.



MADE IN CHINA



IEC 60950-1			
Clause	Requirement + Test	Result - Remark	Verdict
1	GENERAL		P
1.5	Components		P
1.5.1	General	See below.	P
	Comply with IEC 60950-1 or relevant component standard	(See appended tables 1.5.1)	P
1.5.2	Evaluation and testing of components	Components that are certified to IEC and /or national standards are used correctly within their ratings. Components not covered by IEC standards are tested under the conditions present in the equipment.	P
1.5.3	Thermal controls	No thermal control.	N/A
1.5.4	Transformers	No transformers provided.	N/A
1.5.5	Interconnecting cables	No interconnecting cables provided.	N/A
1.5.6	Capacitors bridging insulation	No such capacitor.	N/A
1.5.7	Resistors bridging insulation	No such resistor.	N/A
1.5.7.1	Resistors bridging functional, basic or supplementary insulation	Same as above.	N/A
1.5.7.2	Resistors bridging double or reinforced insulation between a.c. mains and other circuits	Same as above.	N/A
1.5.7.3	Resistors bridging double or reinforced insulation between a.c. mains and antenna or coaxial cable	Same as above.	N/A
1.5.8	Components in equipment for IT power systems	Class III equipment.	N/A
1.5.9	Surge suppressors	No such suppressor.	N/A
1.5.9.1	General	Same as above.	N/A
1.5.9.2	Protection of VDRs	Same as above.	N/A
1.5.9.3	Bridging of functional insulation by a VDR	Same as above.	N/A
1.5.9.4	Bridging of basic insulation by a VDR	Same as above.	N/A
1.5.9.5	Bridging of supplementary, double or reinforced insulation by a VDR	Same as above.	N/A
1.6	Power interface		P
1.6.1	AC power distribution systems	Class III equipment.	N/A



IEC 60950-1			
Clause	Requirement + Test	Result - Remark	Verdict
1.6.2	Input current	The steady state input current of the equipment did not exceed the rated current by more than 10% under the normal load. Results see appended table 1.6.2.	P
1.6.3	Voltage limit of hand-held equipment	This appliance is not a hand-held equipment.	N/A
1.6.4	Neutral conductor	Class III equipment.	N/A
1.7	Marking and instructions		P
1.7.1	Power rating and identification markings	The required marking is located on the outside surface of the equipment.	P
1.7.1.1	Power rating marking	See below.	P
	Multiple mains supply connections.....:	Not directly connected to the mains	N/A
	Rated voltage(s) or voltage range(s) (V)	12V $\overline{\text{---}}$ or 24V~ or 48V $\overline{\text{---}}$	P
	Symbol for nature of supply, for d.c. only	$\overline{\text{---}}$ for DC Input	P
	Rated frequency or rated frequency range (Hz)	50Hz for AC Input	P
	Rated current (mA or A)	See page 3 and 4.	P
1.7.1.2	Identification markings	See below.	P
	Manufacturer's name or trade-mark or identification mark	Manufacturer :Zhejiang Dahua Vision Technology Co., Ltd.	P
	Model identification or type reference	See page 1.	P
	Symbol for Class II equipment only	Class III equipment.	N/A
	Other markings and symbols	Additional symbols or markings do not give rise to misunderstanding.	P
1.7.2	Safety instructions and marking	See below.	P
1.7.2.1	General	The user's manual contains information for operation, installation, servicing, transport, storage and technical data. The operation guide is provided to the user.	P
1.7.2.2	Disconnect devices	This equipment is not permanently connected equipment or pluggable equipment.	N/A



IEC 60950-1			
Clause	Requirement + Test	Result - Remark	Verdict
1.7.2.3	Overcurrent protective device	This equipment is not permanently connected equipment or pluggable equipment.	N/A
1.7.2.4	IT power distribution systems	Class III equipment.	N/A
1.7.2.5	Operator access with a tool	No tool is required to gain access to operator access area.	N/A
1.7.2.6	Ozone	No ozone produces within this equipment.	N/A
1.7.3	Short duty cycles	Equipment is designed for continuous operation.	N/A
1.7.4	Supply voltage adjustment	No adjustment of supply voltage necessary.	N/A
	Methods and means of adjustment; reference to installation instructions	Same as above.	N/A
1.7.5	Power outlets on the equipment	No outlet provided.	N/A
1.7.6	Fuse identification (marking, special fusing characteristics, cross-reference)	No fuse provided.	N/A
1.7.7	Wiring terminals	No such terminals provided.	N/A
1.7.7.1	Protective earthing and bonding terminals	Class III equipment.	N/A
1.7.7.2	Terminals for a.c. mains supply conductors	Same as above.	N/A
1.7.7.3	Terminals for d.c. mains supply conductors	Same as above.	N/A
1.7.8	Controls and indicators	See below.	P
1.7.8.1	Identification, location and marking	The function of controls affecting safety is obvious regardless of language.	P
1.7.8.2	Colours	Colours of the LED indicator are used for functional controls or indicators.	P
1.7.8.3	Symbols according to IEC 60417	No switch used.	N/A
1.7.8.4	Markings using figures	No indicators for different positions.	N/A
1.7.9	Isolation of multiple power sources	Only one supply connection.	N/A
1.7.10	Thermostats and other regulating devices	No such device provided.	N/A



IEC 60950-1			
Clause	Requirement + Test	Result - Remark	Verdict
1.7.11	Durability	The label was subjected to the permanence of marking test. The label was rubbed with cloth soaked with water for 15 s and then again for 15 s with the cloth soaked with petroleum spirit. After this test there was no damage to the label. The marking on the label did not fade. There was neither curling nor lifting of the label edge.	P
1.7.12	Removable parts	No removable part provided.	N/A
1.7.13	Replaceable batteries	Replaceable battery within service access area. Warning text provided in the servicing instructions.	P
	Language(s)	English.	—
1.7.14	Equipment for restricted access locations	Equipment not intended for installation in a restricted access location.	N/A

2	PROTECTION FROM HAZARDS		P
2.1	Protection from electric shock and energy hazards (Only SELV circuits inside the equipment, no electric shock or energy hazards.)		P
2.1.1	Protection in operator access areas	No hazards in operator access areas. Only SELV circuits inside the equipment.	P
2.1.1.1	Access to energized parts	See subclause 2.1.1.	N/A
	Test by inspection		N/A
	Test with test finger (Figure 2A)		N/A
	Test with test pin (Figure 2B)		N/A
	Test with test probe (Figure 2C)	No TNV circuits provided.	N/A
2.1.1.2	Battery compartments	No battery compartment.	N/A
2.1.1.3	Access to ELV wiring	No ELV wiring in operator accessible area.	N/A
	Working voltage (V _{peak} or V _{rms}); minimum distance through insulation (mm)		—
2.1.1.4	Access to hazardous voltage circuit wiring	No hazardous voltage wiring in operator accessible area.	N/A



IEC 60950-1			
Clause	Requirement + Test	Result - Remark	Verdict
2.1.1.5	Energy hazards	No energy hazards circuit in user accessible parts.	P
2.1.1.6	Manual controls	No manual controls.	N/A
2.1.1.7	Discharge of capacitors in equipment	Class III equipment.	N/A
	Measured voltage (V); time-constant (s)		—
2.1.1.8	Energy hazards – d.c. mains supply		N/A
	a) Capacitor connected to the d.c. mains supply ...:		N/A
	b) Internal battery connected to the d.c. mains supply		N/A
2.1.1.9	Audio amplifiers	No audio amplifier provided.	N/A
2.1.2	Protection in service access areas	No maintenance work in operation mode necessary.	N/A
2.1.3	Protection in restricted access locations	The unit is not intended to be used in restricted locations.	N/A
2.2	SELV circuits		P
2.2.1	General requirements	The unit intended to be supplied by SELV and no hazardous voltage generated within unit.	P
2.2.2	Voltages under normal conditions (V)	Evaluated in separate certification of the external power supply.	P
2.2.3	Voltages under fault conditions (V)	Evaluated in separate certification of the external power supply.	P
2.2.4	Connection of SELV circuits to other circuits	SELV circuits are only connected to other SELV circuits.	P
2.3	TNV circuits (No TNV circuits within the equipment.)		N/A
2.3.1	Limits		N/A
	Type of TNV circuits		—
2.3.2	Separation from other circuits and from accessible parts		N/A
2.3.2.1	General requirements		N/A
2.3.2.2	Protection by basic insulation		N/A



IEC 60950-1			
Clause	Requirement + Test	Result - Remark	Verdict
2.3.2.3	Protection by earthing		N/A
2.3.2.4	Protection by other constructions		N/A
2.3.3	Separation from hazardous voltages		N/A
	Insulation employed.....		—
2.3.4	Connection of TNV circuits to other circuits		N/A
	Insulation employed.....		—
2.3.5	Test for operating voltages generated externally		N/A
2.4	Limited current circuits (No such circuit within this equipment.)		N/A
2.4.1	General requirements		N/A
2.4.2	Limit values		N/A
	Frequency (Hz)		—
	Measured current (mA).....		—
	Measured voltage (V)		—
	Measured circuit capacitance (nF or μ F).....		—
2.4.3	Connection of limited current circuits to other circuits		N/A
2.5	Limited power sources		P
	a) Inherently limited output	(See appended table 2.5 for details.)	P
	b) Impedance limited output		N/A
	c) Regulating network limited output under normal operating and single fault condition		N/A
	d) Overcurrent protective device limited output		N/A
	Max. output voltage (V), max. output current (A), max. apparent power (VA)	(See appended table 2.5 for details.)	—
	Current rating of overcurrent protective device (A) .:		—
	Use of integrated circuit (IC) current limiters		—
2.6	Provisions for earthing and bonding (Class III equipment)		N/A
2.6.1	Protective earthing		N/A
2.6.2	Functional earthing		N/A



IEC 60950-1			
Clause	Requirement + Test	Result - Remark	Verdict
2.6.3	Protective earthing and protective bonding conductors		N/A
2.6.3.1	General		N/A
2.6.3.2	Size of protective earthing conductors		N/A
	Rated current (A), cross-sectional area (mm ²), AWG..... :		—
2.6.3.3	Size of protective bonding conductors		N/A
	Rated current (A), cross-sectional area (mm ²), AWG..... :		—
	Protective current rating (A), cross-sectional area (mm ²), AWG..... :		—
2.6.3.4	Resistance of earthing conductors and their terminations; resistance (Ω), voltage drop (V), test current (A), duration (min)..... :		N/A
2.6.3.5	Colour of insulation..... :		N/A
2.6.4	Terminals		N/A
2.6.4.1	General		N/A
2.6.4.2	Protective earthing and bonding terminals		N/A
	Rated current (A), type, nominal thread diameter (mm)..... :		—
2.6.4.3	Separation of the protective earthing conductor from protective bonding conductors		N/A
2.6.5	Integrity of protective earthing		N/A
2.6.5.1	Interconnection of equipment		N/A
2.6.5.2	Components in protective earthing conductors and protective bonding conductors		N/A
2.6.5.3	Disconnection of protective earth		N/A
2.6.5.4	Parts that can be removed by an operator		N/A
2.6.5.5	Parts removed during servicing		N/A
2.6.5.6	Corrosion resistance		N/A
2.6.5.7	Screws for protective bonding		N/A
2.6.5.8	Reliance on telecommunication network or cable distribution system		N/A
2.7	Overcurrent and earth fault protection in primary circuits (The equipment is not directly connected to the AC mains supply.)		N/A
2.7.1	Basic requirements		N/A



IEC 60950-1			
Clause	Requirement + Test	Result - Remark	Verdict
	Instructions when protection relies on building installation		N/A
2.7.2	Faults not simulated in 5.3.7		N/A
2.7.3	Short-circuit backup protection		N/A
2.7.4	Number and location of protective devices		N/A
2.7.5	Protection by several devices		N/A
2.7.6	Warning to service personnel		N/A
2.8	Safety interlocks (No such device within this equipment.)		N/A
2.8.1	General principles		N/A
2.8.2	Protection requirements		N/A
2.8.3	Inadvertent reactivation		N/A
2.8.4	Fail-safe operation		N/A
	Protection against extreme hazard		N/A
2.8.5	Moving parts		N/A
2.8.6	Overriding		N/A
2.8.7	Switches, relays and their related circuits		N/A
2.8.7.1	Separation distances for contact gaps and their related circuits (mm)		N/A
2.8.7.2	Overload test		N/A
2.8.7.3	Endurance test		N/A
2.8.7.4	Electric strength test		N/A
2.8.8	Mechanical actuators		N/A
2.9	Electrical insulation (Class III equipment and only SELV circuit within this equipment.)		P
2.9.1	Properties of insulating materials	Natural rubber, asbestos or hygroscopic materials are not used.	P
2.9.2	Humidity conditioning		N/A
	Relative humidity (%), temperature (°C)		—
2.9.3	Grade of insulation	Functional insulation.	P
2.9.4	Separation from hazardous voltages		N/A
	Method(s) used		—



IEC 60950-1			
Clause	Requirement + Test	Result - Remark	Verdict

2.10	Clearances, creepage distances and distances through insulation (Class III equipment and only SELV circuit within this equipment.)		P
2.10.1	General	See below.	P
2.10.1.1	Frequency	Considerd.	P
2.10.1.2	Pollution degrees	2	P
2.10.1.3	Reduced values for functional insulation	See sub-clause 5.3.4.	P
2.10.1.4	Intervening unconnected conductive parts		N/A
2.10.1.5	Insulation with varying dimensions		N/A
2.10.1.6	Special separation requirements		N/A
2.10.1.7	Insulation in circuits generating starting pulses		N/A
2.10.2	Determination of working voltage		N/A
2.10.2.1	General		N/A
2.10.2.2	RMS working voltage		N/A
2.10.2.3	Peak working voltage		N/A
2.10.3	Clearances		N/A
2.10.3.1	General		N/A
2.10.3.2	Mains transient voltages		N/A
	a) AC mains supply		N/A
	b) Earthed d.c. mains supplies		N/A
	c) Unearthed d.c. mains supplies		N/A
	d) Battery operation		N/A
2.10.3.3	Clearances in primary circuits		N/A
2.10.3.4	Clearances in secondary circuits		N/A
2.10.3.5	Clearances in circuits having starting pulses		N/A
2.10.3.6	Transients from a.c. mains supply		N/A
2.10.3.7	Transients from d.c. mains supply		N/A
2.10.3.8	Transients from telecommunication networks and cable distribution systems		N/A
2.10.3.9	Measurement of transient voltage levels		N/A
	a) Transients from a mains supply		N/A
	For an a.c. mains supply		N/A
	For a d.c. mains supply		N/A
	b) Transients from a telecommunication network :		N/A



IEC 60950-1			
Clause	Requirement + Test	Result - Remark	Verdict
2.10.4	Creepage distances		N/A
2.10.4.1	General		N/A
2.10.4.2	Material group and comparative tracking index		N/A
	CTI tests		—
2.10.4.3	Minimum creepage distances		N/A
2.10.5	Solid insulation		N/A
2.10.5.1	General		N/A
2.10.5.2	Distances through insulation		N/A
2.10.5.3	Insulating compound as solid insulation		N/A
2.10.5.4	Semiconductor devices		N/A
2.10.5.5	Cemented joints		N/A
2.10.5.6	Thin sheet material – General		N/A
2.10.5.7	Separable thin sheet material		N/A
	Number of layers (pcs).....		—
2.10.5.8	Non-separable thin sheet material		N/A
2.10.5.9	Thin sheet material – standard test procedure		N/A
	Electric strength test		—
2.10.5.10	Thin sheet material – alternative test procedure		N/A
	Electric strength test		—
2.10.5.11	Insulation in wound components		N/A
2.10.5.12	Wire in wound components		N/A
	Working voltage		N/A
	a) Basic insulation not under stress		N/A
	b) Basic, supplementary, reinforced insulation		N/A
	c) Compliance with Annex U		N/A
	Two wires in contact inside wound component; angle between 45° and 90°		N/A
2.10.5.13	Wire with solvent-based enamel in wound components		N/A
	Electric strength test		—
	Routine test		N/A
2.10.5.14	Additional insulation in wound components		N/A
	Working voltage		N/A
	- Basic insulation not under stress		N/A



IEC 60950-1			
Clause	Requirement + Test	Result - Remark	Verdict
	- Supplementary, reinforced insulation		N/A
2.10.6	Construction of printed boards		N/A
2.10.6.1	Uncoated printed boards		N/A
2.10.6.2	Coated printed boards		N/A
2.10.6.3	Insulation between conductors on the same inner surface of a printed board		N/A
2.10.6.4	Insulation between conductors on different layers of a printed board		N/A
	Distance through insulation		N/A
	Number of insulation layers (pcs).....		N/A
2.10.7	Component external terminations		N/A
2.10.8	Tests on coated printed boards and coated components		N/A
2.10.8.1	Sample preparation and preliminary inspection		N/A
2.10.8.2	Thermal conditioning		N/A
2.10.8.3	Electric strength test		N/A
2.10.8.4	Abrasion resistance test		N/A
2.10.9	Thermal cycling		N/A
2.10.10	Test for Pollution Degree 1 environment and insulating compound		N/A
2.10.11	Tests for semiconductor devices and cemented joints		N/A
2.10.12	Enclosed and sealed parts		N/A

3	WIRING, CONNECTIONS AND SUPPLY		P
3.1	General		P
3.1.1	Current rating and overcurrent protection	All wires have suitable and adequate current capability.	P
3.1.2	Protection against mechanical damage	Wireways are smooth and free from sharp edges.	P
3.1.3	Securing of internal wiring	All internal wiring is secured well.	P
3.1.4	Insulation of conductors	The conductors have adequate insulation ability.	P
3.1.5	Beads and ceramic insulators	No such insulators used.	N/A
3.1.6	Screws for electrical contact pressure	No electrical contact pressure by screwed connection.	N/A



IEC 60950-1			
Clause	Requirement + Test	Result - Remark	Verdict
3.1.7	Insulating materials in electrical connections		N/A
3.1.8	Self-tapping and spaced thread screws	No self-tapping or spaced thread screws used.	N/A
3.1.9	Termination of conductors		N/A
	10 N pull test		N/A
3.1.10	Sleeving on wiring	No sleeving used as supplementary insulation.	N/A

3.2	Connection to a mains supply <i>(The equipment is not directly connected to the mains supply.)</i>		N/A
3.2.1	Means of connection		N/A
3.2.1.1	Connection to an a.c. mains supply		N/A
3.2.1.2	Connection to a d.c. mains supply		N/A
3.2.2	Multiple supply connections		N/A
3.2.3	Permanently connected equipment		N/A
	Number of conductors, diameter of cable and conduits (mm)		—
3.2.4	Appliance inlets		N/A
3.2.5	Power supply cords		N/A
3.2.5.1	AC power supply cords		N/A
	Type		—
	Rated current (A), cross-sectional area (mm ²), AWG		—
3.2.5.2	DC power supply cords		N/A
3.2.6	Cord anchorages and strain relief		N/A
	Mass of equipment (kg), pull (N)		—
	Longitudinal displacement (mm)		—
3.2.7	Protection against mechanical damage		N/A
3.2.8	Cord guards		N/A
	Diameter or minor dimension D (mm); test mass (g)		—
	Radius of curvature of cord (mm)		—
3.2.9	Supply wiring space		N/A



IEC 60950-1			
Clause	Requirement + Test	Result - Remark	Verdict
3.3	Wiring terminals for connection of external conductors (The equipment is not directly connected to the AC mains supply.)		N/A
3.3.1	Wiring terminals		N/A
3.3.2	Connection of non-detachable power supply cords		N/A
3.3.3	Screw terminals		N/A
3.3.4	Conductor sizes to be connected		N/A
	Rated current (A), cord/cable type, cross-sectional area (mm ²)		—
3.3.5	Wiring terminal sizes		N/A
	Rated current (A), type, nominal thread diameter (mm)		—
3.3.6	Wiring terminal design		N/A
3.3.7	Grouping of wiring terminals		N/A
3.3.8	Stranded wire		N/A
3.4	Disconnection from the mains supply (The equipment is not directly connected to the mains supply.)		N/A
3.4.1	General requirement		N/A
3.4.2	Disconnect devices		N/A
3.4.3	Permanently connected equipment		N/A
3.4.4	Parts which remain energized		N/A
3.4.5	Switches in flexible cords		N/A
3.4.6	Number of poles - single-phase and d.c. equipment		N/A
3.4.7	Number of poles - three-phase equipment		N/A
3.4.8	Switches as disconnect devices		N/A
3.4.9	Plugs as disconnect devices		N/A
3.4.10	Interconnected equipment		N/A
3.4.11	Multiple power sources		N/A
3.5	Interconnection of equipment		P
3.5.1	General requirements	See below.	P
3.5.2	Types of interconnection circuits	Interconnection circuit is SELV circuits.	P
3.5.3	ELV circuits as interconnection circuits	No ELV interconnection circuits	N/A



IEC 60950-1			
Clause	Requirement + Test	Result - Remark	Verdict
3.5.4	Data ports for additional equipment	All data ports complied with limit power source. See appended table 2.5.	P

4	PHYSICAL REQUIREMENTS		P
4.1	Stability		N/A
	Angle of 10°	The weight of unit does not exceed 7kg.	N/A
	Test force (N)	Equipment is not a floor standing unit.	N/A

4.2	Mechanical strength		P
4.2.1	General		N/A
	Rack-mounted equipment.		N/A
4.2.2	Steady force test, 10 N		N/A
4.2.3	Steady force test, 30 N		N/A
4.2.4	Steady force test, 250 N		N/A
4.2.5	Impact test		N/A
	Fall test		N/A
	Swing test		N/A
4.2.6	Drop test; height (mm)		N/A
4.2.7	Stress relief test		N/A
4.2.8	Cathode ray tubes	No cathode ray tube.	N/A
	Picture tube separately certified		N/A
4.2.9	High pressure lamps	No high pressure lamp.	N/A
4.2.10	Wall or ceiling mounted equipment; force (N)	Apply 50N force to the centre of gravity of the equipment for 1 min. The equipment and its associate mounting system means remain secure.	P
4.2.11	Rotating solid media		N/A
	Test to cover on the door.....		N/A

4.3	Design and construction		P
4.3.1	Edges and corners	Edges and corners of the enclosure are rounded.	P
4.3.2	Handles and manual controls; force (N)	No such handle or control.	N/A



IEC 60950-1			
Clause	Requirement + Test	Result - Remark	Verdict
4.3.3	Adjustable controls	No such control.	N/A
4.3.4	Securing of parts	Electrical and mechanical connections can be expected to withstand usual mechanical stress. No loosening of parts is likely to occur.	N/A
4.3.5	Connection by plugs and sockets	Only SELV connector.	N/A
4.3.6	Direct plug-in equipment	The equipment is not a direct plug-in unit.	N/A
	Torque		—
	Compliance with the relevant mains plug standard		N/A
4.3.7	Heating elements in earthed equipment	No heating elements.	N/A
4.3.8	Batteries	Approved rechargeable source. See appended table 1.5.1.	P
	- Overcharging of a rechargeable battery	See appended table 4.3.8	P
	- Unintentional charging of a non-rechargeable battery		N/A
	- Reverse charging of a rechargeable battery	No reverse discharging is likely due to the construction design.	N/A
	- Excessive discharging rate for any battery	No excessive discharging is likely due to the construction design.	N/A
4.3.9	Oil and grease	No oil and grease within this equipment.	N/A
4.3.10	Dust, powders, liquids and gases	No dust, powder, liquid and gas within this equipment.	N/A
4.3.11	Containers for liquids or gases	No container within this equipment.	N/A
4.3.12	Flammable liquids	No liquid within this equipment.	N/A
	Quantity of liquid (l)	Same as above.	N/A
	Flash point (°C)	Same as above.	N/A
4.3.13	Radiation	See below.	P
4.3.13.1	General	See below.	P
4.3.13.2	Ionizing radiation	No ionizing radiation, laser or flammable gases presents.	N/A



IEC 60950-1			
Clause	Requirement + Test	Result - Remark	Verdict
	Measured radiation (pA/kg)	Same as above.	—
	Measured high-voltage (kV)	Same as above.	—
	Measured focus voltage (kV)	Same as above.	—
	CRT markings	Same as above.	—
4.3.13.3	Effect of ultraviolet (UV) radiation on materials	No UV radiation.	N/A
	Part, property, retention after test, flammability classification	Same as above.	N/A
4.3.13.4	Human exposure to ultraviolet (UV) radiation	No UV radiation.	N/A
4.3.13.5	Lasers (including laser diodes) and LEDs	The LED is considered as indicating light.	P
4.3.13.5.1	Lasers (including laser laser diodes)		N/A
	Laser class		—
4.3.13.5.2	Light emitting diodes (LEDs)	The LED power is far below Class 1 LED limit.	P
4.3.13.6	Other types	No other types used.	N/A
4.4	Protection against hazardous moving parts <i>(No hazard moving part within this equipment.)</i>		N/A
4.4.1	General		N/A
4.4.2	Protection in operator access areas		N/A
	Household and home/office document/media shredders		N/A
4.4.3	Protection in restricted access locations		N/A
4.4.4	Protection in service access areas		N/A
4.4.5	Protection against moving fan blades		N/A
4.4.5.1	General		N/A
	Not considered to cause pain or injury. a).....		N/A
	Is considered to cause pain, not injury. b)		N/A
	Considered to cause injury. c)		N/A
4.4.5.2	Protection for users		N/A
	Use of symbol or warning		N/A
4.4.5.3	Protection for service persons		N/A
	Use of symbol or warning		N/A
4.5	Thermal requirements		P



IEC 60950-1			
Clause	Requirement + Test	Result - Remark	Verdict
4.5.1	General	No exceeding temperature.	P
4.5.2	Temperature tests	(See appended table 4.5)	P
	Normal load condition per Annex L	(See Annex L)	—
4.5.3	Temperature limits for materials	(See appended table 4.5)	P
4.5.4	Touch temperature limits	(See appended table 4.5)	P
4.5.5	Resistance to abnormal heat	Only SELV circuit.	N/A
4.6	Openings in enclosures		P
4.6.1	Top and side openings	No openings.	P
	Dimensions (mm)		—
4.6.2	Bottoms of fire enclosures	No openings.	P
	Construction of the bottom, dimensions (mm) ..		—
4.6.3	Doors or covers in fire enclosures	No such door or cover.	N/A
4.6.4	Openings in transportable equipment		N/A
4.6.4.1	Constructional design measures		N/A
	Dimensions (mm)		—
4.6.4.2	Evaluation measures for larger openings		N/A
4.6.4.3	Use of metallized parts		N/A
4.6.5	Adhesives for constructional purposes		N/A
	Conditioning temperature (°C), time (weeks).....		—
4.7	Resistance to fire		P
4.7.1	Reducing the risk of ignition and spread of flame	Use of materials with the required flammability classes.	P
	Method 1, selection and application of components wiring and materials	Method 1 used.	P
	Method 2, application of all of simulated fault condition tests	Same as above.	N/A
4.7.2	Conditions for a fire enclosure	See below.	P
4.7.2.1	Parts requiring a fire enclosure	With having the following components: - components in Secondary circuits supplied by power sources that exceed the limits specified in 2.5 The fire enclosure is required.	P



IEC 60950-1			
Clause	Requirement + Test	Result - Remark	Verdict
4.7.2.2	Parts not requiring a fire enclosure	See 4.7.2.1	N/A
4.7.3	Materials		P
4.7.3.1	General	Integrated circuits and small electrical parts mounted on a printed wiring board min. rated V-1.	P
4.7.3.2	Materials for fire enclosures	Metal enclosure and plastic enclosure. See appended table 1.5.1 for details.	P
4.7.3.3	Materials for components and other parts outside fire enclosures	No parts outside the fire enclosure	N/A
4.7.3.4	Materials for components and other parts inside fire enclosures	Internal components except small parts are V-2 or better.	P
4.7.3.5	Materials for air filter assemblies	No air filter assembly within this equipment.	N/A
4.7.3.6	Materials used in high-voltage components	No high-voltage component within this equipment.	N/A

5	ELECTRICAL REQUIREMENTS AND SIMULATED ABNORMAL CONDITIONS		P
5.1	Touch current and protective conductor current (Class III equipment and only SELV circuit within this equipment.)		N/A
5.1.1	General		N/A
5.1.2	Configuration of equipment under test (EUT)		N/A
5.1.2.1	Single connection to an a.c. mains supply		N/A
5.1.2.2	Redundant multiple connections to an a.c. mains supply		N/A
5.1.2.3	Simultaneous multiple connections to an a.c. mains supply		N/A
5.1.3	Test circuit		N/A
5.1.4	Application of measuring instrument		N/A
5.1.5	Test procedure		N/A
5.1.6	Test measurements		N/A
	Supply voltage (V)		—
	Measured touch current (mA)		—
	Max. allowed touch current (mA)		—
	Measured protective conductor current (mA)		—
	Max. allowed protective conductor current (mA) ...		—



IEC 60950-1			
Clause	Requirement + Test	Result - Remark	Verdict
5.1.7	Equipment with touch current exceeding 3,5 mA		N/A
5.1.7.1	General		N/A
5.1.7.2	Simultaneous multiple connections to the supply		N/A
5.1.8	Touch currents to telecommunication networks and cable distribution systems and from telecommunication networks		N/A
5.1.8.1	Limitation of the touch current to a telecommunication network or to a cable distribution system		N/A
	Supply voltage (V)		—
	Measured touch current (mA)		—
	Max. allowed touch current (mA)		—
5.1.8.2	Summation of touch currents from telecommunication networks		N/A
	a) EUT with earthed telecommunication ports		N/A
	b) EUT whose telecommunication ports have no reference to protective earth		N/A
5.2	Electric strength		N/A
5.2.1	General		N/A
5.2.2	Test procedure		N/A
5.3	Abnormal operating and fault conditions		P
5.3.1	Protection against overload and abnormal operation	See below.	P
5.3.2	Motors		N/A
5.3.3	Transformers	No transformers provided.	N/A
5.3.4	Functional insulation	Method c). Results see appended table 5.3.	P
5.3.5	Electromechanical components		N/A
5.3.6	Audio amplifiers in ITE		N/A
5.3.7	Simulation of faults	(See appended table 5.3.)	P
5.3.8	Unattended equipment		N/A
5.3.9	Compliance criteria for abnormal operating and fault conditions	No fire occurred. No molten metal was emitted.	P
5.3.9.1	During the tests	Same as above.	P



IEC 60950-1			
Clause	Requirement + Test	Result - Remark	Verdict
5.3.9.2	After the tests		N/A
6	CONNECTION TO TELECOMMUNICATION NETWORKS (No TNV circuit within this equipment.)		N/A
6.1	Protection of telecommunication network service persons, and users of other equipment connected to the network, from hazards in the equipment		N/A
6.1.1	Protection from hazardous voltages		N/A
6.1.2	Separation of the telecommunication network from earth		N/A
6.1.2.1	Requirements		N/A
	Supply voltage (V)		—
	Current in the test circuit (mA)		—
6.1.2.2	Exclusions		N/A
6.2	Protection of equipment users from overvoltages on telecommunication networks		N/A
6.2.1	Separation requirements		N/A
6.2.2	Electric strength test procedure		N/A
6.2.2.1	Impulse test		N/A
6.2.2.2	Steady-state test		N/A
6.2.2.3	Compliance criteria		N/A
6.3	Protection of the telecommunication wiring system from overheating		N/A
	Max. output current (A)		—
	Current limiting method		—
7	CONNECTION TO CABLE DISTRIBUTION SYSTEMS (No cable distribution system within this equipment.)		N/A
7.1	General		N/A
7.2	Protection of cable distribution system service persons, and users of other equipment connected to the system, from hazardous voltages in the equipment		N/A
7.3	Protection of equipment users from overvoltages on the cable distribution system		N/A



IEC 60950-1			
Clause	Requirement + Test	Result - Remark	Verdict
7.4	Insulation between primary circuits and cable distribution systems		N/A
7.4.1	General		N/A
7.4.2	Voltage surge test		N/A
7.4.3	Impulse test		N/A

A	ANNEX A, TESTS FOR RESISTANCE TO HEAT AND FIRE		N/A
A.1	Flammability test for fire enclosures of movable equipment having a total mass exceeding 18 kg, and of stationary equipment (see 4.7.3.2)		N/A
A.1.1	Samples.....:		—
	Wall thickness (mm).....:		—
A.1.2	Conditioning of samples; temperature (°C)		N/A
A.1.3	Mounting of samples		N/A
A.1.4	Test flame (see IEC 60695-11-3)		N/A
	Flame A, B, C or D		—
A.1.5	Test procedure		N/A
A.1.6	Compliance criteria		N/A
	Sample 1 burning time (s)		—
	Sample 2 burning time (s)		—
	Sample 3 burning time (s)		—
A.2	Flammability test for fire enclosures of movable equipment having a total mass not exceeding 18 kg, and for material and components located inside fire enclosures (see 4.7.3.2 and 4.7.3.4)		N/A
A.2.1	Samples, material.....:		—
	Wall thickness (mm).....:		—
A.2.2	Conditioning of samples; temperature (°C)		N/A
A.2.3	Mounting of samples		N/A
A.2.4	Test flame (see IEC 60695-11-4)		N/A
	Flame A, B or C		—
A.2.5	Test procedure		N/A
A.2.6	Compliance criteria		N/A
	Sample 1 burning time (s)		—
	Sample 2 burning time (s)		—



IEC 60950-1			
Clause	Requirement + Test	Result - Remark	Verdict
	Sample 3 burning time (s)		—
A.2.7	Alternative test acc. to IEC 60695-11-5, cl. 5 and 9		N/A
	Sample 1 burning time (s)		—
	Sample 2 burning time (s)		—
	Sample 3 burning time (s)		—
A.3	Hot flaming oil test (see 4.6.2)		N/A
A.3.1	Mounting of samples		N/A
A.3.2	Test procedure		N/A
A.3.3	Compliance criterion		N/A

B	ANNEX B, MOTOR TESTS UNDER ABNORMAL CONDITIONS (see 4.7.2.2 and 5.3.2)		N/A
B.1	General requirements		N/A
	Position		—
	Manufacturer		—
	Type		—
	Rated values		—
B.2	Test conditions		N/A
B.3	Maximum temperatures		N/A
B.4	Running overload test		N/A
B.5	Locked-rotor overload test		N/A
	Test duration (days)		—
	Electric strength test: test voltage (V)		—
B.6	Running overload test for d.c. motors in secondary circuits		N/A
B.6.1	General		N/A
B.6.2	Test procedure		N/A
B.6.3	Alternative test procedure		N/A
B.6.4	Electric strength test; test voltage (V)		N/A
B.7	Locked-rotor overload test for d.c. motors in secondary circuits		N/A
B.7.1	General		N/A
B.7.2	Test procedure		N/A
B.7.3	Alternative test procedure		N/A



IEC 60950-1			
Clause	Requirement + Test	Result - Remark	Verdict
B.7.4	Electric strength test; test voltage (V)		N/A
B.8	Test for motors with capacitors		N/A
B.9	Test for three-phase motors		N/A
B.10	Test for series motors		N/A
	Operating voltage (V)		—
C	ANNEX C, TRANSFORMERS (see 1.5.4 and 5.3.3)		N/A
	Position		—
	Manufacturer		—
	Type		—
	Rated values		—
	Method of protection		—
C.1	Overload test		N/A
C.2	Insulation		N/A
	Protection from displacement of windings.....		N/A
D	ANNEX D, MEASURING INSTRUMENTS FOR TOUCH-CURRENT TESTS (see 5.1.4)		N/A
D.1	Measuring instrument		N/A
D.2	Alternative measuring instrument		N/A
E	ANNEX E, TEMPERATURE RISE OF A WINDING (see 1.4.13)		N/A
F	ANNEX F, MEASUREMENT OF CLEARANCES AND CREEPAGE DISTANCES (see 2.10 and Annex G)		N/A
G	ANNEX G, ALTERNATIVE METHOD FOR DETERMINING MINIMUM CLEARANCES		N/A
G.1	Clearances		N/A
G.1.1	General		N/A
G.1.2	Summary of the procedure for determining minimum clearances		N/A
G.2	Determination of mains transient voltage (V)		N/A
G.2.1	AC mains supply		N/A



IEC 60950-1			
Clause	Requirement + Test	Result - Remark	Verdict
G.2.2	Earthed d.c. mains supplies		N/A
G.2.3	Unearthed d.c. mains supplies		N/A
G.2.4	Battery operation		N/A
G.3	Determination of telecommunication network transient voltage (V)		N/A
G.4	Determination of required withstand voltage (V)		N/A
G.4.1	Mains transients and internal repetitive peaks		N/A
G.4.2	Transients from telecommunication networks		N/A
G.4.3	Combination of transients		N/A
G.4.4	Transients from cable distribution systems		N/A
G.5	Measurement of transient voltages (V)		N/A
	a) Transients from a mains supply		N/A
	For an a.c. mains supply		N/A
	For a d.c. mains supply		N/A
	b) Transients from a telecommunication network		N/A
G.6	Determination of minimum clearances		N/A
H	ANNEX H, IONIZING RADIATION (see 4.3.13)		N/A
J	ANNEX J, TABLE OF ELECTROCHEMICAL POTENTIALS (see 2.6.5.6)		N/A
	Metal(s) used		—
K	ANNEX K, THERMAL CONTROLS (see 1.5.3 and 5.3.8)		N/A
K.1	Making and breaking capacity		N/A
K.2	Thermostat reliability; operating voltage (V)		N/A
K.3	Thermostat endurance test; operating voltage (V)		N/A
K.4	Temperature limiter endurance; operating voltage (V)		N/A
K.5	Thermal cut-out reliability		N/A
K.6	Stability of operation		N/A
L	ANNEX L, NORMAL LOAD CONDITIONS FOR SOME TYPES OF ELECTRICAL BUSINESS EQUIPMENT (see 1.2.2.1 and 4.5.2)		P
L.1	Typewriters		N/A



IEC 60950-1			
Clause	Requirement + Test	Result - Remark	Verdict
L.2	Adding machines and cash registers		N/A
L.3	Erasers		N/A
L.4	Pencil sharpeners		N/A
L.5	Duplicators and copy machines		N/A
L.6	Motor-operated files		N/A
L.7	Other business equipment	(See appended table 1.6.2)	P
M	ANNEX M, CRITERIA FOR TELEPHONE RINGING SIGNALS (see 2.3.1)		N/A
M.1	Introduction		N/A
M.2	Method A		N/A
M.3	Method B		N/A
M.3.1	Ringling signal		N/A
M.3.1.1	Frequency (Hz)		—
M.3.1.2	Voltage (V)		—
M.3.1.3	Cadence; time (s), voltage (V)		—
M.3.1.4	Single fault current (mA)		—
M.3.2	Tripping device and monitoring voltage		N/A
M.3.2.1	Conditions for use of a tripping device or a monitoring voltage		N/A
M.3.2.2	Tripping device		N/A
M.3.2.3	Monitoring voltage (V)		N/A
N	ANNEX N, IMPULSE TEST GENERATORS (see 1.5.7.2, 1.5.7.3, 2.10.3.9, 6.2.2.1, 7.3.2, 7.4.3 and Clause G.5)		N/A
N.1	ITU-T impulse test generators		N/A
N.2	IEC 60065 impulse test generator		N/A
P	ANNEX P, NORMATIVE REFERENCES		—
Q	ANNEX Q, Voltage dependent resistors (VDRs) (see 1.5.9.1)		N/A
	a) Preferred climatic categories		N/A
	b) Maximum continuous voltage		N/A
	c) Pulse current		N/A



IEC 60950-1			
Clause	Requirement + Test	Result - Remark	Verdict
R	ANNEX R, EXAMPLES OF REQUIREMENTS FOR QUALITY CONTROL PROGRAMMES		N/A
R.1	Minimum separation distances for unpopulated coated printed boards (see 2.10.6.2)		N/A
R.2	Reduced clearances (see 2.10.3)		N/A
S	ANNEX S, PROCEDURE FOR IMPULSE TESTING (see 6.2.2.3)		N/A
S.1	Test equipment		N/A
S.2	Test procedure		N/A
S.3	Examples of waveforms during impulse testing		N/A
T	ANNEX T, GUIDANCE ON PROTECTION AGAINST INGRESS OF WATER (see 1.1.2)		N/A
			—
U	ANNEX U, INSULATED WINDING WIRES FOR USE WITHOUT INTERLEAVED INSULATION (see 2.10.5.12)		N/A
			—
V	ANNEX V, AC POWER DISTRIBUTION SYSTEMS (see 1.6.1)		N/A
V.1	Introduction		N/A
V.2	TN power distribution systems		N/A
W	ANNEX W, SUMMATION OF TOUCH CURRENTS		N/A
W.1	Touch current from electronic circuits		N/A
W.1.1	Floating circuits		N/A
W.1.2	Earthed circuits		N/A
W.2	Interconnection of several equipments		N/A
W.2.1	Isolation		N/A
W.2.2	Common return, isolated from earth		N/A
W.2.3	Common return, connected to protective earth		N/A
X	ANNEX X, MAXIMUM HEATING EFFECT IN TRANSFORMER TESTS (see clause C.1)		N/A
X.1	Determination of maximum input current		N/A



IEC 60950-1			
Clause	Requirement + Test	Result - Remark	Verdict
X.2	Overload test procedure		N/A
Y	ANNEX Y, ULTRAVIOLET LIGHT CONDITIONING TEST (see 4.3.13.3)		N/A
Y.1	Test apparatus		N/A
Y.2	Mounting of test samples		N/A
Y.3	Carbon-arc light-exposure apparatus		N/A
Y.4	Xenon-arc light exposure apparatus		N/A
Z	ANNEX Z, OVERVOLTAGE CATEGORIES (see 2.10.3.2 and Clause G.2)		N/A
AA	ANNEX AA, MANDREL TEST (see 2.10.5.8)		N/A
BB	ANNEX BB, CHANGES IN THE SECOND EDITION		—
CC	ANNEX CC, Evaluation of integrated circuit (IC) current limiters		N/A
CC.1	General		N/A
CC.2	Test program 1.....		N/A
CC.3	Test program 2.....		N/A
DD	ANNEX DD, Requirements for the mounting means of rack-mounted equipment		N/A
DD.1	General		N/A
DD.2	Mechanical strength test, variable N.....		N/A
DD.3	Mechanical strength test, 250N, including end stops.....		N/A
DD.4	Compliance.....		N/A
EE	ANNEX EE, Household and home/office document/media shredders		N/A
EE.1	General		N/A
EE.2	Markings and instructions		N/A
	Use of markings or symbols.....		N/A
	Information of user instructions, maintenance and/or servicing instructions.....		N/A
EE.3	Inadvertent reactivation test.....		N/A



IEC 60950-1			
Clause	Requirement + Test	Result - Remark	Verdict
EE.4	Disconnection of power to hazardous moving parts:		N/A
	Use of markings or symbols.....:		N/A
EE.5	Protection against hazardous moving parts		N/A
	Test with test finger (Figure 2A):		N/A
	Test with wedge probe (Figure EE1 and EE2):		N/A



IEC 60950-1					
Clause	Requirement + Test			Result - Remark	Verdict
EN 60950-1:2006/A11:2009/A1:2010/A12:2011 – CENELEC COMMON MODIFICATIONS					
Contents	Add the following annexes: Annex ZA (normative) Normative references to international publications with their corresponding European publications Annex ZB (normative) Special national conditions				P
General	Delete all the “country” notes in the reference document (IEC 60950-1:2005) according to the following list: 1.4.8 Note 2 1.5.1 Note 2 & 3 1.5.7.1 Note 1.5.8 Note 2 1.5.9.4 Note 1.7.2.1 Note 4, 5 & 6 2.2.3 Note 2.2.4 Note 2.3.2 Note 2.3.2.1 Note 2 2.3.4 Note 2 2.6.3.3 Note 2 & 3 2.7.1 Note 2.10.3.2 Note 2 2.10.5.13 Note 3 3.2.1.1 Note 3.2.4 Note 3. 2.5.1 Note 2 4.3.6 Note 1 & 2 4.7 Note 4 4.7.2.2 Note 4.7.3.1Note 2 5.1.7.1 Note 3 & 4 5.3.7 Note 1 6 Note 2 & 5 6.1.2.1 Note 2 6.1.2.2 Note 6.2.2 Note 6.2.2.1 Note 2 6.2.2.2 Note 7.1 Note 3 7.2 Note 7.3 Note 1 & 2 G.2.1 Note 2 Annex H Note 2				P
General (A1:2010)	Delete all the “country” notes in the reference document (IEC 60950-1:2005/A1:2010) according to the following list: 1.5.7.1 Note 6.1.2.1 Note 2 6.2.2.1 Note 2 EE.3 Note				P
1.3.Z1	Add the following subclause: 1.3.Z1 Exposure to excessive sound pressure The apparatus shall be so designed and constructed as to present no danger when used for its intended purpose, either in normal operating conditions or under fault conditions, particularly providing protection against exposure to excessive sound pressures from headphones or earphones. NOTE Z1 A new method of measurement is described in EN 50332-1, Sound system equipment: Headphones and earphones associated with portable audio equipment - Maximum sound pressure level measurement methodology and limit considerations - Part 1: General method for “one package equipment”, and in EN 50332-2, Sound system equipment: Headphones and earphones associated with portable audio equipment - Maximum sound pressure level measurement methodology and limit considerations - Part 2: Guidelines to associate sets with headphones coming from different manufacturers.			See below.	N/A



IEC 60950-1			
Clause	Requirement + Test	Result - Remark	Verdict
(A12:2011)	In EN 60950-1:2006/A12:2011 Delete the addition of 1.3.Z1 / EN 60950-1:2006 Delete the definition 1.2.3.Z1 / EN 60950-1:2006 /A1:2010	Deleted.	N/A
1.5.1	Add the following NOTE: NOTE Z1 The use of certain substances in electrical and electronic equipment is restricted within the EU: see Directive 2002/95/EC	Added.	P
1.7.2.1 (A1:2010)	In addition, for a PORTABLE SOUND SYSTEM, the instructions shall include a warning that excessive sound pressure from earphones and headphones can cause hearing loss.	The equipment is not a PORTABLE SOUND SYSTEM.	N/A
1.7.2.1 (A12:2011)	In EN 60950-1:2006/A12:2011 Delete NOTE Z1 and the addition for Portable Sound System. Add the following clause and annex to the existing standard and amendments.	Same as above.	N/A
	Zx Protection against excessive sound pressure from personal music players		N/A
	<p>Zx.1 General</p> <p>This sub-clause specifies requirements for protection against excessive sound pressure from personal music players that are closely coupled to the ear. It also specifies requirements for earphones and headphones intended for use with personal music players.</p> <p>A personal music player is a portable equipment for personal use, that:</p> <ul style="list-style-type: none"> is designed to allow the user to listen to recorded or broadcast sound or video; and primarily uses headphones or earphones that can be worn in or on or around the ears; and allows the user to walk around while in use. <p>NOTE 1 Examples are hand-held or body-worn portable CD players, MP3 audio players, mobile phones with MP3 type features, PDA's or similar equipment.</p> <p>A personal music player and earphones or headphones intended to be used with personal music players shall comply with the requirements of this sub-clause.</p> <p>The requirements in this sub-clause are valid for music or video mode only.</p> <p>The requirements do not apply:</p> <ul style="list-style-type: none"> while the personal music player is connected 		N/A




IEC 60950-1			
Clause	Requirement + Test	Result - Remark	Verdict
	<p>to an external amplifier; or while the headphones or earphones are not used.</p> <p>NOTE 2 An external amplifier is an amplifier which is not part of the personal music player or the listening device, but which is intended to play the music as a standalone music player.</p> <p>The requirements do not apply to: hearing aid equipment and professional equipment;</p> <p>NOTE 3 Professional equipment is equipment sold through special sales channels. All products sold through normal electronics stores are considered not to be professional equipment.</p>		
	<p>analogue personal music players (personal music players without any kind of digital processing of the sound signal) that are brought to the market before the end of 2015.</p> <p>NOTE 4 This exemption has been allowed because this technology is falling out of use and it is expected that within a few years it will no longer exist. This exemption will not be extended to other technologies.</p> <p>For equipment which is clearly designed or intended for use by young children, the limits of EN 71-1 apply.</p>		N/A
	<p>Zx.2 Equipment requirements</p> <p>No safety provision is required for equipment that complies with the following:</p> <ul style="list-style-type: none"> equipment provided as a package (personal music player with its listening device), where the acoustic output $L_{Aeq,T}$ is ≤ 85 dBA measured while playing the fixed "programme simulation noise" as described in EN 50332-1; and a personal music player provided with an analogue electrical output socket for a listening device, where the electrical output is ≤ 27 mV measured as described in EN 50332-2, while playing the fixed "programme simulation noise" as described in EN 50332-1. <p>NOTE 1 Wherever the term acoustic output is used in this clause, the 30 s A-weighted equivalent sound pressure level $L_{Aeq,T}$ is meant. See also Zx.5 and Annex Zx.</p> <p>All other equipment shall:</p> <ul style="list-style-type: none"> a) protect the user from unintentional acoustic outputs exceeding those mentioned above; and b) have a standard acoustic output level not exceeding those mentioned above, and automatically return to an output level not exceeding those mentioned above when the 		N/A



IEC 60950-1			
Clause	Requirement + Test	Result - Remark	Verdict
	power is switched off; and		
	<p>c) provide a means to actively inform the user of the increased sound pressure when the equipment is operated with an acoustic output exceeding those mentioned above. Any means used shall be acknowledged by the user before activating a mode of operation which allows for an acoustic output exceeding those mentioned above. The acknowledgement does not need to be repeated more than once every 20 h of cumulative listening time; and</p> <p>NOTE 2 Examples of means include visual or audible signals. Action from the user is always required.</p> <p>NOTE 3 The 20 h listening time is the accumulative listening time, independent how often and how long the personal music player has been switched off.</p> <p>d) have a warning as specified in Zx.3; and</p> <p>e) not exceed the following:</p> <ol style="list-style-type: none"> 1) equipment provided as a package (player with its listening device), the acoustic output shall be ≤ 100 dBA measured while playing the fixed "programme simulation noise" described in EN 50332-1; and 2) a personal music player provided with an analogue electrical output socket for a listening device, the electrical output shall be ≤ 150 mV measured as described in EN 50332-2, while playing the fixed "programme simulation noise" described in EN 50332-1. <p>For music where the average sound pressure (long term $L_{Aeq,T}$) measured over the duration of the song is lower than the average produced by the programme simulation noise, the warning does not need to be given as long as the average sound pressure of the song is below the basic limit of 85 dBA. In this case T becomes the duration of the song.</p> <p>NOTE 4 Classical music typically has an average sound pressure (long term $L_{Aeq,T}$) which is much lower than the average programme simulation noise. Therefore, if the player is capable to analyse the song and compare it with the programme simulation noise, the warning does not need to be given as long as the average sound pressure of the song is below the basic limit of 85 dBA.</p> <p>For example, if the player is set with the programme simulation noise to 85 dBA, but the average music level of the song is only 65 dBA, there is no need to give a warning or ask an acknowledgement as long as the average sound level of the song is not above the basic limit of 85 dBA.</p>		N/A



IEC 60950-1			
Clause	Requirement + Test	Result - Remark	Verdict
	<p>Zx.3 Warning The warning shall be placed on the equipment, or on the packaging, or in the instruction manual and shall consist of the following: the symbol of Figure 1 with a minimum height of 5 mm; and the following wording, or similar: “To prevent possible hearing damage, do not listen at high volume levels for long periods.”</p>  <p>Figure 1 – Warning label (IEC 60417-6044)</p> <p>Alternatively, the entire warning may be given through the equipment display during use, when the user is asked to acknowledge activation of the higher level.</p>		N/A
	Zx.4 Requirements for listening devices (headphones and earphones)		N/A
	<p>Zx.4.1 Wired listening devices with analogue input With 94 dBA sound pressure output $L_{Aeq,T}$, the input voltage of the fixed “programme simulation noise” described in EN 50332-2 shall be ≥ 75 mV. This requirement is applicable in any mode where the headphones can operate (active or passive), including any available setting (for example built-in volume level control). NOTE The values of 94 dBA – 75 mV correspond with 85dBA – 27 mV and 100 dBA – 150 mV.</p>		N/A
	<p>Zx.4.2 Wired listening devices with digital input With any playing device playing the fixed “programme simulation noise” described in EN 50332-1 (and respecting the digital interface standards, where a digital interface standard exists that specifies the equivalent acoustic level), the acoustic output $L_{Aeq,T}$ of the listening device shall be ≤ 100 dBA.</p>		N/A



IEC 60950-1			
Clause	Requirement + Test	Result - Remark	Verdict
	<p>This requirement is applicable in any mode where the headphones can operate, including any available setting (for example built-in volume level control, additional sound feature like equalization, etc.).</p> <p>NOTE An example of a wired listening device with digital input is a USB headphone.</p>		
	<p>Zx.4.3 Wireless listening devices In wireless mode: with any playing and transmitting device playing the fixed programme simulation noise described in EN 50332-1; and respecting the wireless transmission standards, where an air interface standard exists that specifies the equivalent acoustic level; and with volume and sound settings in the listening device (for example built-in volume level control, additional sound feature like equalization, etc.) set to the combination of positions that maximize the measured acoustic output for the abovementioned programme simulation noise, the acoustic output $L_{Aeq,T}$ of the listening device shall be ≤ 100 dBA.</p> <p>NOTE An example of a wireless listening device is a Bluetooth headphone.</p>		N/A
	<p>Zx.5 Measurement methods Measurements shall be made in accordance with EN 50332-1 or EN 50332-2 as applicable. Unless stated otherwise, the time interval T shall be 30 s.</p> <p>NOTE Test method for wireless equipment provided without listening device should be defined.</p>		N/A
2.7.1	<p>Replace the subclause as follows:</p> <p>Basic requirements</p> <p>To protect against excessive current, short-circuits and earth faults in PRIMARY CIRCUITS, protective devices shall be included either as integral parts of the equipment or as parts of the building installation, subject to the following, a), b) and c):</p> <p>a) except as detailed in b) and c), protective devices necessary to comply with the requirements of 5.3 shall be included as parts of the equipment;</p>		N/A



IEC 60950-1			
Clause	Requirement + Test	Result - Remark	Verdict
	b) for components in series with the mains input to the equipment such as the supply cord, appliance coupler, r.f.i. filter and switch, short-circuit and earth fault protection may be provided by protective devices in the building installation;		
	c) it is permitted for PLUGGABLE EQUIPMENT TYPE B or PERMANENTLY CONNECTED EQUIPMENT, to rely on dedicated overcurrent and short-circuit protection in the building installation, provided that the means of protection, e.g. fuses or circuit breakers, is fully specified in the installation instructions. If reliance is placed on protection in the building installation, the installation instructions shall so state, except that for PLUGGABLE EQUIPMENT TYPE A the building installation shall be regarded as providing protection in accordance with the rating of the wall socket outlet.	Neither PLUGGABLE EQUIPMENT TYPE B or PERMANENTLY CONNECTED EQUIPMENT.	N/A
2.7.2	This subclause has been declared 'void'.		P
3.2.3	Delete the NOTE in Table 3A, and delete also in this table the conduit sizes in parentheses.	Deleted.	N/A
3.2.5.1	Replace "60245 IEC 53" by "H05 RR-F"; "60227 IEC 52" by "H03 VV-F or H03 VVH2-F"; "60227 IEC 53" by "H05 VV-F or H05 VVH2-F2". In Table 3B, replace the first four lines by the following: Up to and including 6 0,75 ^{a)} Over 6 up to and including 10 (0,75) ^{b)} 1,0 Over 10 up to and including 16 (1,0) ^{c)} 1,5 In the conditions applicable to Table 3B delete the words "in some countries" in condition ^{a)} . In NOTE 1, applicable to Table 3B, delete the second sentence.		N/A
3.3.4	In Table 3D, delete the fourth line: conductor sizes for 10 to 13 A, and replace with the following: Over 10 up to and including 16 1,5 to 2,5 1,5 to 4 Delete the fifth line: conductor sizes for 13 to 16 A		N/A



IEC 60950-1			
Clause	Requirement + Test	Result - Remark	Verdict
4.3.13.6 (A1:2010)	Replace the existing NOTE by the following: NOTE Z1 Attention is drawn to: 1999/519/EC: Council Recommendation on the limitation of exposure of the general public to electromagnetic fields 0 Hz to 300 GHz, and 2006/25/EC: Directive on the minimum health and safety requirements regarding the exposure of workers to risks arising from physical agents (artificial optical radiation).		N/A
	Standards taking into account mentioned Recommendation and Directive which demonstrate compliance with the applicable EU Directive are indicated in the OJEC.		N/A
Annex H	Replace the last paragraph of this annex by: At any point 10 cm from the surface of the OPERATOR ACCESS AREA, the dose rate shall not exceed 1 µSv/h (0,1 mR/h) (see NOTE). Account is taken of the background level. Replace the notes as follows: NOTE These values appear in Directive 96/29/Euratom. Delete NOTE 2.	No ionizing radiation.	N/A
Bibliography	Additional EN standards.		—
ZA	NORMATIVE REFERENCES TO INTERNATIONAL PUBLICATIONS WITH THEIR CORRESPONDING EUROPEAN PUBLICATIONS		—

ZB ANNEX (normative)			
SPECIAL NATIONAL CONDITIONS (EN)			
Clause	Requirement + Test	Result - Remark	Verdict
1.2.4.1	In Denmark , certain types of Class I appliances (see 3.2.1.1) may be provided with a plug not establishing earthing conditions when inserted into Danish socket-outlets.	No power cord provided.	N/A
1.2.13.14	In Norway and Sweden , for requirements see 1.7.2.1 and 7.3 of this annex.		N/A
1.5.7.1	In Finland , Norway and Sweden , resistors bridging BASIC INSULATION in CLASS I PLUGGABLE EQUIPMENT TYPE A must comply with the requirements in 1.5.7.1. In addition when a single resistor is used, the resistor must withstand the resistor test in 1.5.7.2.	No such components.	N/A



IEC 60950-1			
Clause	Requirement + Test	Result - Remark	Verdict
1.5.8	In Norway , due to the IT power system used (see annex V, Figure V.7), capacitors are required to be rated for the applicable line-to-line voltage (230 V).		N/A
1.5.9.4	In Finland, Norway and Sweden , the third dashed sentence is applicable only to equipment as defined in 6.1.2.2 of this annex.		N/A
1.7.2.1	<p>In Finland, Norway and Sweden, CLASS I PLUGGABLE EQUIPMENT TYPE A intended for connection to other equipment or a network shall, if safety relies on connection to protective earth or if surge suppressors are connected between the network terminals and accessible parts, have a marking stating that the equipment must be connected to an earthed mains socket-outlet.</p> <p>The marking text in the applicable countries shall be as follows:</p> <p>In Finland: "Laite on liitettävä suojakoskettimilla varustettuun pistorasiaan"</p> <p>In Norway: "Apparatet må tilkoples jordet stikkontakt"</p> <p>In Sweden: "Apparaten skall anslutas till jordat uttag"</p> <p>In Norway and Sweden, the screen of the cable distribution system is normally not earthed at the entrance of the building and there is normally no equipotential bonding system within the building. Therefore the protective earthing of the building installation need to be isolated from the screen of a cable distribution system.</p> <p>It is however accepted to provide the insulation external to the equipment by an adapter or an interconnection cable with galvanic isolator, which may be provided by e.g. a retailer.</p> <p>The user manual shall then have the following or similar information in Norwegian and Swedish language respectively, depending on in what country the equipment is intended to be used in:</p> <p>"Equipment connected to the protective earthing of the building installation through the mains connection or through other equipment with a connection to protective earthing – and to a cable distribution system using coaxial cable, may in some circumstances create a fire hazard. Connection to a cable distribution system has therefore to be provided through a device</p>		N/A



IEC 60950-1			
Clause	Requirement + Test	Result - Remark	Verdict
	providing electrical isolation below a certain frequency range (galvanic isolator, see EN 60728-11)."		
	<p>NOTE In Norway, due to regulation for installations of cable distribution systems, and in Sweden, a galvanic isolator shall provide electrical insulation below 5 MHz. The insulation shall withstand a dielectric strength of 1,5 kV r.m.s., 50 Hz or 60 Hz, for 1 min.</p> <p>Translation to Norwegian (the Swedish text will also be accepted in Norway):</p> <p>"Utstyr som er koplet til beskyttelsesjord via nettplugg og/eller via annet jordtilkoplet utstyr – og er tilkoplet et kabel-TV nett, kan forårsake brannfare. For å unngå dette skal det ved tilkopling av utstyret til kabel-TV nettet installeres en galvanisk isolator mellom utstyret og kabel- TV nettet."</p> <p>Translation to Swedish:</p> <p>"Utrustning som är kopplad till skyddsjord via jordat vägguttag och/eller via annan utrustning och samtidigt är kopplad till kabel-TV nät kan i vissa fall medföra risk för brand. För att undvika detta skall vid anslutning av utrustningen till kabel-TV nät galvanisk isolator finnas mellan utrustningen och kabel-TV nätet."</p>		N/A
1.7.5	<p>In Denmark, socket-outlets for providing power to other equipment shall be in accordance with the Heavy Current Regulations, Section 107-2-D1, Standard Sheet DK 1-3a, DK 1-5a or DK 1-7a, when used on Class I equipment. For STATIONARY EQUIPMENT the socket-outlet shall be in accordance with Standard Sheet DK 1-1b or DK 1-5a.</p> <p>For CLASS II EQUIPMENT the socket outlet shall be in accordance with Standard Sheet DKA 1-4a.</p>	No socket-outlet provided.	N/A
2.2.4	In Norway , for requirements see 1.7.2.1, 6.1.2.1 and 6.1.2.2 of this annex.		N/A
2.3.2	In Finland, Norway and Sweden there are additional requirements for the insulation. See 6.1.2.1 and 6.1.2.2 of this annex.		N/A
2.3.4	In Norway , for requirements see 1.7.2.1, 6.1.2.1 and 6.1.2.2 of this annex.		N/A



IEC 60950-1			
Clause	Requirement + Test	Result - Remark	Verdict
2.6.3.3	In the United Kingdom , the current rating of the circuit shall be taken as 13 A, not 16 A.		N/A
2.7.1	In the United Kingdom , to protect against excessive currents and short-circuits in the PRIMARY CIRCUIT of DIRECT PLUG-IN EQUIPMENT, tests according to 5.3 shall be conducted, using an external protective device rated 30 A or 32 A. If these tests fail, suitable protective devices shall be included as integral parts of the DIRECT PLUG-IN EQUIPMENT, so that the requirements of 5.3 are met.		N/A
2.10.5.13	In Finland, Norway and Sweden , there are additional requirements for the insulation, see 6.1.2.1 and 6.1.2.2 of this annex.		N/A
3.2.1.1	In Switzerland , supply cords of equipment having a RATED CURRENT not exceeding 10 A shall be provided with a plug complying with SEV 1011 or IEC 60884-1 and one of the following dimension sheets: SEV 6532-2.1991 Plug Type 15 3P+N+PE 250/400 V, 10 A		N/A
	SEV 6533-2.1991 Plug Type 11 L+N 250 V, 10 A SEV 6534-2.1991 Plug Type 12 L+N+PE 250 V, 10 A In general, EN 60309 applies for plugs for currents exceeding 10 A. However, a 16 A plug and socket-outlet system is being introduced in Switzerland, the plugs of which are according to the following dimension sheets, published in February 1998: SEV 5932-2.1998: Plug Type 25 , 3L+N+PE 230/400 V, 16 A SEV 5933-2.1998: Plug Type 21, L+N, 250 V, 16A SEV 5934-2.1998: Plug Type 23, L+N+PE 250 V, 1		N/A



IEC 60950-1			
Clause	Requirement + Test	Result - Remark	Verdict
3.2.1.1	<p>In Denmark, supply cords of single-phase equipment having a rated current not exceeding 13 A shall be provided with a plug according to the Heavy Current Regulations, Section 107-2-D1.</p> <p>CLASS I EQUIPMENT provided with socket-outlets with earth contacts or which are intended to be used in locations where protection against indirect contact is required according to the wiring rules shall be provided with a plug in accordance with standard sheet DK 2-1a or DK 2-5a.</p> <p>If poly-phase equipment and single-phase equipment having a RATED CURRENT exceeding 13 A is provided with a supply cord with a plug, this plug shall be in accordance with the Heavy Current Regulations, Section 107-2-D1 or EN 60309-2.</p>		N/A
3.2.1.1	<p>In Spain, supply cords of single-phase equipment having a rated current not exceeding 10 A shall be provided with a plug according to UNE 20315:1994.</p> <p>Supply cords of single-phase equipment having a rated current not exceeding 2,5 A shall be provided with a plug according to UNE-EN 50075:1993.</p> <p>CLASS I EQUIPMENT provided with socket-outlets with earth contacts or which are intended to be used in locations where protection against indirect contact is required according to the wiring rules, shall be provided with a plug in accordance with standard UNE 20315:1994.</p> <p>If poly-phase equipment is provided with a supply cord with a plug, this plug shall be in accordance with UNE-EN 60309-2.</p>		N/A
3.2.1.1	<p>In the United Kingdom, apparatus which is fitted with a flexible cable or cord and is designed to be connected to a mains socket conforming to BS 1363 by means of that flexible cable or cord and plug, shall be fitted with a 'standard plug' in accordance with Statutory Instrument 1768:1994 - The Plugs and Sockets etc. (Safety) Regulations 1994, unless exempted by those regulations.</p> <p>NOTE 'Standard plug' is defined in SI 1768:1994 and essentially means an approved plug conforming to BS 1363 or an approved conversion plug.</p>		N/A



IEC 60950-1			
Clause	Requirement + Test	Result - Remark	Verdict
3.2.1.1	In Ireland , apparatus which is fitted with a flexible cable or cord and is designed to be connected to a mains socket conforming to I.S. 411 by means of that flexible cable or cord and plug, shall be fitted with a 13 A plug in accordance with Statutory Instrument 525:1997 - National Standards Authority of Ireland (section 28) (13 A Plugs and Conversion Adaptors for Domestic Use) Regulations 1997.		N/A
3.2.4	In Switzerland , for requirements see 3.2.1.1 of this annex.		N/A
3.2.5.1	In the United Kingdom , a power supply cord with conductor of 1,25 mm ² is allowed for equipment with a rated current over 10 A and up to and including 13 A.		N/A
3.3.4	In the United Kingdom , the range of conductor sizes of flexible cords to be accepted by terminals for equipment with a RATED CURRENT of over 10 A up to and including 13 A is: • 1,25 mm ² to 1,5 mm ² nominal cross-sectional area.		N/A
4.3.6	In the United Kingdom , the torque test is performed using a socket outlet complying with BS 1363 part 1:1995, including Amendment 1:1997 and Amendment 2:2003 and the plug part of DIRECT PLUG-IN EQUIPMENT shall be assessed to BS 1363: Part 1, 12.1, 12.2, 12.3, 12.9, 12.11, 12.12, 12.13, 12.16 and 12.17, except that the test of 12.17 is performed at not less than 125 °C. Where the metal earth pin is replaced by an Insulated Shutter Opening Device (ISOD), the requirements of clauses 22.2 and 23 also apply.	Not direct plug-in equipment.	N/A
4.3.6	In Ireland , DIRECT PLUG-IN EQUIPMENT is known as plug similar devices. Such devices shall comply with Statutory Instrument 526:1997 - National Standards Authority of Ireland (Section 28) (Electrical plugs, plug similar devices and sockets for domestic use) Regulations, 1997.	Same as above.	N/A
5.1.7.1	In Finland, Norway and Sweden TOUCH CURRENT measurement results exceeding 3,5 mA r.m.s. are permitted only for the following equipment: • STATIONARY PLUGGABLE EQUIPMENT TYPE A that is intended to be used in a RESTRICTED	Not such equipment.	N/A



IEC 60950-1			
Clause	Requirement + Test	Result - Remark	Verdict
	<p>ACCESS LOCATION where equipotential bonding has been applied, for example, in a telecommunication centre; and</p> <p>has provision for a permanently connected PROTECTIVE EARTHING CONDUCTOR; and</p> <p>is provided with instructions for the installation of that conductor by a SERVICE PERSON;</p> <ul style="list-style-type: none"> • STATIONARY PLUGGABLE EQUIPMENT TYPE B; • STATIONARY PERMANENTLY CONNECTED EQUIPMENT. 		
6.1.2.1 (A1:2010)	<p>In Finland, Norway and Sweden, add the following text between the first and second paragraph of the compliance clause:</p> <p>If this insulation is solid, including insulation forming part of a component, it shall at least consist of either</p> <ul style="list-style-type: none"> - two layers of thin sheet material, each of which shall pass the electric strength test below, or - one layer having a distance through insulation of at least 0,4 mm, which shall pass the electric strength test below. <p>Alternatively for components, there is no distance through insulation requirements for the insulation consisting of an insulating compound completely filling the casing, so that CLEARANCES and CREEPAGE DISTANCES do not exist, if the component passes the electric strength test in accordance with the compliance clause below and in addition</p> <ul style="list-style-type: none"> - passes the tests and inspection criteria of 2.10.11 with an electric strength test of 1,5 kV multiplied by 1,6 (the electric strength test of 2.10.10 shall be performed using 1,5 kV), and - is subject to ROUTINE TESTING for electric strength during manufacturing, using a test voltage of 1,5 kV. 		N/A
	<p>It is permitted to bridge this insulation with an optocoupler complying with 2.10.5.4 b).</p> <p>It is permitted to bridge this insulation with a capacitor complying with EN 60384-14:2005,</p>		N/A



IEC 60950-1			
Clause	Requirement + Test	Result - Remark	Verdict
	<p>subclass Y2.</p> <p>A capacitor classified Y3 according to EN 60384-14:2005, may bridge this insulation under the following conditions:</p> <ul style="list-style-type: none"> - the insulation requirements are satisfied by having a capacitor classified Y3 as defined by EN 60384-14, which in addition to the Y3 testing, is tested with an impulse test of 2,5 kV defined in EN 60950-1:2006, 6.2.2.1; - the additional testing shall be performed on all the test specimens as described in EN 60384-14; - the impulse test of 2,5 kV is to be performed before the endurance test in EN 60384-14, in the sequence of tests as described in EN 60384-14. 		
6.1.2.2	<p>In Finland, Norway and Sweden, the exclusions are applicable for PERMANENTLY CONNECTED EQUIPMENT, PLUGGABLE EQUIPMENT TYPE B and equipment intended to be used in a RESTRICTED ACCESS LOCATION where equipotential bonding has been applied, e.g. in a telecommunication centre, and which has provision for a permanently connected PROTECTIVE EARTHING CONDUCTOR and is provided with instructions for the installation of that conductor by a SERVICE PERSON.</p>		N/A
7.2	<p>In Finland, Norway and Sweden, for requirements see 6.1.2.1 and 6.1.2.2 of this annex.</p> <p>The term TELECOMMUNICATION NETWORK in 6.1.2 being replaced by the term CABLE DISTRIBUTION SYSTEM.</p>		N/A
7.3	<p>In Norway and Sweden, for requirements see 1.2.13.14 and 1.7.2.1 of this annex.</p>		N/A
7.3	<p>In Norway, for installation conditions see EN 60728-11:2005.</p>		N/A



1.5.1	TABLE: List of critical components					P
Object/part No.	Manufacturer/ trademark	Type/model	Technical data	Standard (Edition / year)	Mark(s) of conformity ¹⁾	
Metal enclosure	--	--	Metal, minimum 2.0mm thickness	--	--	
Plastic enclosure	SABIC	C6600	5VB or better, minimum 2.0mm thickness, 70°C	UL 94, UL 746	UL	
Power adapter (For rating: 24Vac, 0.13A used)	Hon-Kwang Electric Co., Ltd.	HKA-A24150- 230	Input: AC 230V, 50Hz, 200mA Output: AC 24V, 1500mA, Class II, 25°C.	IEC 60950-1: 2005+A1: 2009+A2:2013 EN 60950- 1:2006 + A1: 2010 + A12: 2011+A2: 2013	GS by TUV RH	
	Interchangeable	Interchangeable	Output: 24Vac, 50Hz, minimum 0.13A, minimum 60°C	EN 60950- 1:2006+A11:200 9+A1:2010+A12: 2011 or later version	Approved by certification Body	
Power adapter (For rating: 24Vac, 0.21A used)	Hon-Kwang Electric Co., Ltd.	HKA-A24150- 230	Input: AC 230V, 50Hz, 200mA Output: AC 24V, 1500mA, Class II, 25°C.	IEC 60950-1: 2005+A1: 2009+A2:2013 EN 60950- 1:2006 + A1: 2010 + A12: 2011+A2: 2013	GS by TUV RH	
	Interchangeable	Interchangeable	Output: 24Vac, 50Hz, minimum 0.21A, minimum 60°C	EN 60950- 1:2006+A11:200 9+A1:2010+A12: 2011 or later version	Approved by certification Body	
Power adapter (For rating: 24Vac, 0.29A used)	Hon-Kwang Electric Co., Ltd.	HKA-A24150- 230	Input: AC 230V, 50Hz, 200mA Output: AC 24V, 1500mA, Class II, 25°C.	IEC 60950-1: 2005+A1: 2009+A2:2013 EN 60950- 1:2006 + A1: 2010 + A12: 2011+A2: 2013	GS by TUV RH	
	Interchangeable	Interchangeable	Output: 24Vac, 50Hz, minimum 0.29A, minimum 60°C	EN 60950- 1:2006+A11:200 9+A1:2010+A12: 2011 or later version	Approved by certification Body	



Power adapter (For rating: 12Vdc, 0.42A used)	Shenzhen Honor Electronic	ADS-12B-12 12012Gz	Input: 100- 240Vac, 50/60Hz, 0.3A maximum Output: 12Vdc, 1.0A, Class II, L.P.S, 40°C	IEC 60950-1: 2005+A1: 2009; EN 60950-1: 2006+A11: 2009+A1: 2010+A12: 2011	CB by Nemko
	Interchangeable	Interchangeable	Output: 12Vdc, minimum 0.42A, L.P.S, minimum 60°C	EN 60950- 1:2006+A11:200 9+A1:2010+A12: 2011 or later version	Approved by certification Body
Power adapter (For rating: 12Vdc, 0.58A used)	Shenzhen Honor Electronic	ADS-12B-12 12012Gz	Input: 100- 240Vac, 50/60Hz, 0.3A maximum Output: 12Vdc, 1.0A, Class II, L.P.S, 40°C	IEC 60950-1: 2005+A1: 2009; EN 60950-1: 2006+A11: 2009+A1: 2010+A12: 2011	CB by Nemko
	Interchangeable	Interchangeable	Output: 12Vdc, minimum 0.58A, L.P.S, minimum 60°C	EN 60950- 1:2006+A11:200 9+A1:2010+A12: 2011 or later version	Approved by certification Body
Power adapter (For rating: 12Vdc, 0.25A used)	Shenzhen Honor Electronic	ADS-12B-12 12012Gz	Input: 100- 240Vac, 50/60Hz, 0.3A maximum Output: 12Vdc, 1.0A, Class II, L.P.S, 40°C	IEC 60950-1: 2005+A1: 2009; EN 60950-1: 2006+A11: 2009+A1: 2010+A12: 2011	CB by Nemko
	Interchangeable	Interchangeable	Output: 12Vdc, minimum 0.25A, L.P.S, minimum 60°C	EN 60950- 1:2006+A11:200 9+A1:2010+A12: 2011 or later version	Approved by certification Body
Power source (For rating 48Vdc, 0.072A used)	Interchangeable	Interchangeable	Output: Minimum 48Vdc, minimum 0.072A, L.P.S, minimum 60°C.	EN 60950- 1:2006+A11:200 9+A1:2010+A12: 2011 or later version	Approved by certification Body
Power source (For rating 48Vdc, 0.120A used)	Interchangeable	Interchangeable	Output: Minimum 48Vdc, minimum 0.120A, L.P.S, minimum 60°C.	EN 60950- 1:2006+A11:200 9+A1:2010+A12: 2011 or later version	Approved by certification Body



Power source (For rating 48Vdc, 0.160A used)	Interchangeable	Interchangeable	Output: Minimum 48Vdc, minimum 0.160A, L.P.S, minimum 60°C.	EN 60950- 1:2006+A11:200 9+A1:2010+A12: 2011 or later version	Approved by certification Body
Power source (For rating 48Vdc, 0.200A used)	Interchangeable	Interchangeable	Output: Minimum 48Vdc, minimum 0.200A, L.P.S, minimum 60°C.	EN 60950- 1:2006+A11:200 9+A1:2010+A12: 2011 or later version	Approved by certification Body
RTC Battery	SII	MS621FE	Maximum charging current 300mA. Maximum charging voltage 3.4Vdc.	UL 1642	UL
	Interchangeable	MS621FE	Maximum charging current 300mA. Maximum charging voltage 3.4Vdc.Charging curent by multiple components D18, R268 and R267.	UL 1642	UL
PCB	Interchangeable	Interchangeable	Minimum V-1 or better, minimum 105°C	UL 796, UL 94	UL
Supplementary information:					



1.6.2	TABLE: Electrical data (in normal conditions)					P
U (V)	I (A)	I _{rated} (A)	P (W)	Fuse #	I _{fuse} (A)	Condition/status
For model IPC-HDBW5302-Mercury						
12Vdc	0.201	0.58	2.41	--	--	Maximum normal load
24Vac/50Hz	0.232	0.29	5.57	--	--	Maximum normal load
48Vdc	0.085	0.200	6.72	--	--	Maximum normal load
For model IPC-HDBW5202-Mercury						
12Vdc	0.242	0.58	2.90	--	--	Maximum normal load
24Vac/50Hz	0.216	0.29	5.18	--	--	Maximum normal load
48Vdc	0.078	0.200	3.74	--	--	Maximum normal load
For model IPC-HDBW5100-Mercury						
12Vdc	0.205	0.42	2.46	--	--	Maximum normal load
24Vac/50Hz	0.18	0.21	4.56	--	--	Maximum normal load
48Vdc	0.067	0.120	3.22	--	--	Maximum normal load
Supplementary information: Maximum normal load: Units operated normally, all IR lights were on.						

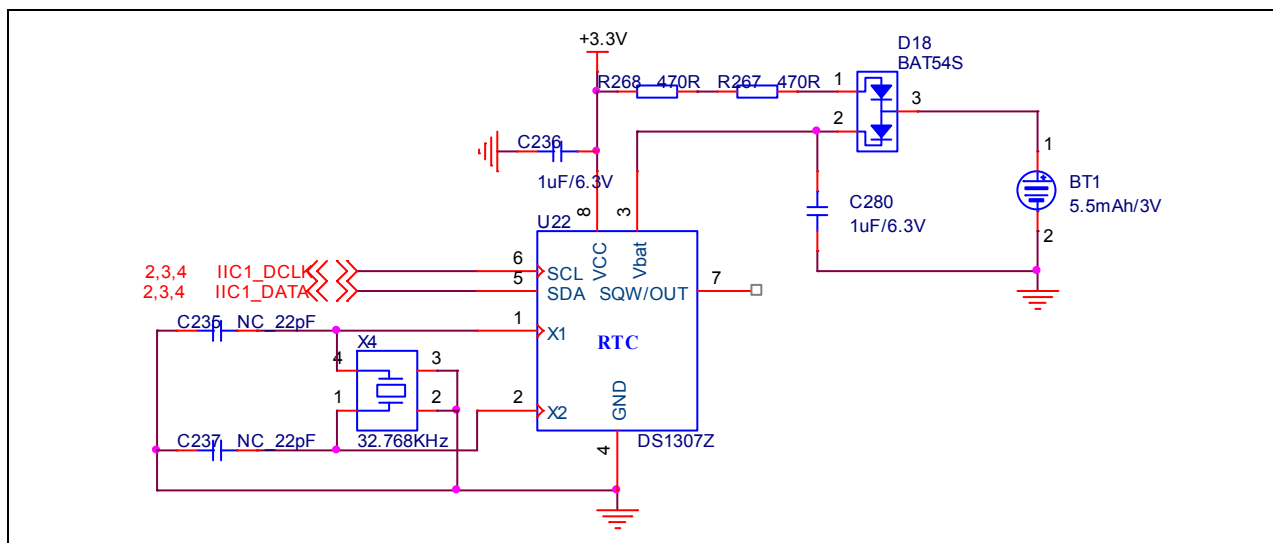
2.5	TABLE: limited power sources			P
Circuit output tested: See below				
Measured Uoc (V) with all load circuits disconnected: See below				
	I _{sc} (A)		VA	
	Meas.	Limit	Meas.	Limit
According to table 2B, Normal, J7 (RJ45 port) Pin 1-8 to GND, Uoc=0Vdc	0	8.0	0	100
According to table 2B, Normal, J5 (I/O port; GND: Pin 2, 5, 7) Pin 1, 3, 4, 8, 9 to GND, Uoc=0Vdc	0	8.0	0	100
According to table 2B, Normal, J5 (I/O port; GND: Pin 2, 5, 7) Pin 6 to GND, Uoc=4.1Vdc	0	8.0	0	100
supplementary information:				

4.3.8	TABLE: Batteries		P
The tests of 4.3.8 are applicable only when appropriate battery data is not available		See below.	P



Is it possible to install the battery in a reverse polarity position?						Not possible.		--	
	Non-rechargeable batteries			Rechargeable batteries					
	Discharging		Un-intentional charging	Charging		Discharging		Reversed charging	
	Meas. current	Manuf. Specs.		Meas. current	Manuf. Specs.	Meas. current	Manuf. Specs.	Meas. current	Manuf. Specs.
Max. current during normal condition	--	--	--	3.29mA	300mA	--	--	--	--
Max. A during fault condition	--	--	--	6.59mA (R268 shorted)	300mA	--	--	--	--
Max. A during fault condition	--	--	--	3.51mA (D18 Pin 1 to 3 shorted)	300mA	--	--	--	--
Max. A during fault condition	--	--	--	3.29mA (U22 Pin 3 to 8 shorted)	300mA	--	--	--	--
Test results:								Verdict	
- Chemical leaks						No chemical leak.		P	
- Explosion of the battery						No explosion of the battery.		P	
- Emission of flame or expulsion of molten metal						No emission of flame or expulsion of molten metal.		P	
- Electric strength tests of equipment after completion of tests								N/A	
Supplementary information:									

4.3.8	TABLE: Batteries	P
Battery category: Lithium		
Manufacturer: See appended table 1.5.1		
Type / model.....: See appended table 1.5.1		
Voltage: --		
Capacity: --		
Tested and Certified by (incl. Ref. No.): See appended table 1.5.1 and table 4.3.8		
Circuit protection diagram: See below.		



MARKINGS AND INSTRUCTIONS (1.7.2.1, 1.7.13)

Location of replaceable battery	Replaceable battery is placed in service access area.
Language(s)	English.
Close to the battery	N/A
In the servicing instructions	Provide.
In the operating instructions	N/A

4.5	TABLE: Thermal requirements				P	
	Supply voltage (V) :	See below	See below		—	
	Ambient T _{min} (°C) :	--	--		—	
	Ambient T _{max} (°C) :	See below	See below		—	
Maximum measured temperature T of part/at:		T (°C)			Allowed T _{max} (°C)	
Test voltage		12Vdc		24Vac/50Hz	--	
Test Position (Test with model IPC-HDBW5302-Mercury)		Wall Mounting	Ceiling Mounting	Wall Mounting	Ceiling Mounting	--
T1 body		65.8	66.4	67.3	67.6	105
T2 body		66.0	66.4	72.3	72.5	105
L1 coil		64.8	65.3	67.7	68.2	105
JK1 body		64.8	65.3	67.7	68.2	105
C3 body		65.6	66.1	72.9	73.4	105
PCB near U6		67.4	67.9	69.0	69.5	105
D1 body		64.3	65.0	65.7	66.3	105



BT1 body	68.1	68.6	72.2	72.7	105
LED board	69.3	70.1	70.0	70.7	105
Internal plastic enclosure	62.5	63.4	63.0	64.4	--
External plastic enclosure	60.4	61.2	60.9	61.4	95
Metal enclosure	60.1	60.2	60.3	61.4	70
Ambient	60.0	60.0	60.1	60.1	--
Test voltage	48Vdc		--		--
Test Position (Test with model IPC-HDBW5302-Mercury)	Wall Mounting	Ceiling Mounting	--	--	--
T1 body	68.4	69.0	--	--	105
T2 body	73.7	74.2	--	--	105
L1 coil	68.2	69.1	--	--	105
JK1 body	68.2	69.1	--	--	105
C3 body	72.7	73.5	--	--	105
PCB near U6	69.6	70.2	--	--	105
D1 body	67.3	68.1	--	--	105
BT1 body	73.1	73.6	--	--	105
LED board	70.0	70.8	--	--	105
Internal plastic enclosure	63.2	64.1	--	--	--
External plastic enclosure	61.5	62.3	--	--	95
Metal enclosure	60.6	63.6	--	--	70
Ambient	60.0	60.0	--	--	--
For external power adapter, type HKA-A24150-230					
Test voltage	207Vac/ 50Hz		253Vac/ 50Hz		--
Primary wire	72.1		86.1		105
Transformer Primary winding	75.5		93.5		110
Transformer Secondary winding	75.6		93.8		110
Transformer Core	75.6		93.8		110
Internal top enclosure	66.1		73.5		--
Internal bottom enclosure	66.6		73.2		--
Output cord	62.1		63.4		80
External top enclosure	66.3		72.1		95
External bottom enclosure	71.7		83.8		95
Ambient	60.7		60.7		--
For external power adapter, type ADS-12B-12 12012GPG					
Test Voltage	90Vac/50Hz		264Vac/50Hz-		--
Primary wire	38.5	76.0	39.3	76.8	80



L1 body	44.6	82.1	44.6	82.1	105
C8 body	49.5	87.0	50.1	87.6	105
PCB near D1	49.8	87.3	51.1	88.6	105
MOV1 body	44.5	82.0	45.1	82.6	105
PCB near U1	49.6	87.1	52.0	89.5	105
T1 coil	53.3	90.8	56.4	93.9	110
T1 core	50.9	88.4	53.7	91.2	110
PCB near T1	47.1	84.6	49.9	87.4	105
U2 body	42.1	79.6	43.5	81.0	100
LF1 coil	40.5	78.0	41.1	78.6	105
C11 body	44.3	81.8	45.5	83.0	105
Internal plastic enclosure near T1	49.4	86.9	51.6	89.1	--
External plastic enclosure near T1	41.4	78.9	42.1	79.6	95
Output cord	28	65.5	26.9	64.4	80
Plug holder	27.2	64.7	27.0	64.5	95
Ambient	22.5	Shift=60.0	22.5	Shift=60.0	--

Supplementary information:							
Temperature T of winding:	t ₁ (°C)	R ₁ (Ω)	t ₂ (°C)	R ₂ (Ω)	T (°C)	Allowed T _{max} (°C)	Insulation class
--	--	--	--	--	--	--	--

Supplementary information:

- The temperatures were measured under worst normal mode defined in 1.2.2.1 and as described in subclause 1.6.2 and at voltages as described above.
- The maximum ambient temperature permitted by the manufacturer's specification is 60°C.

Components with:

PCB → Tmax = 105°C

Touch temperture limits:

Metal enclosure → Tmax = 70°C

Plastic enclosure → Tmax = 95°C

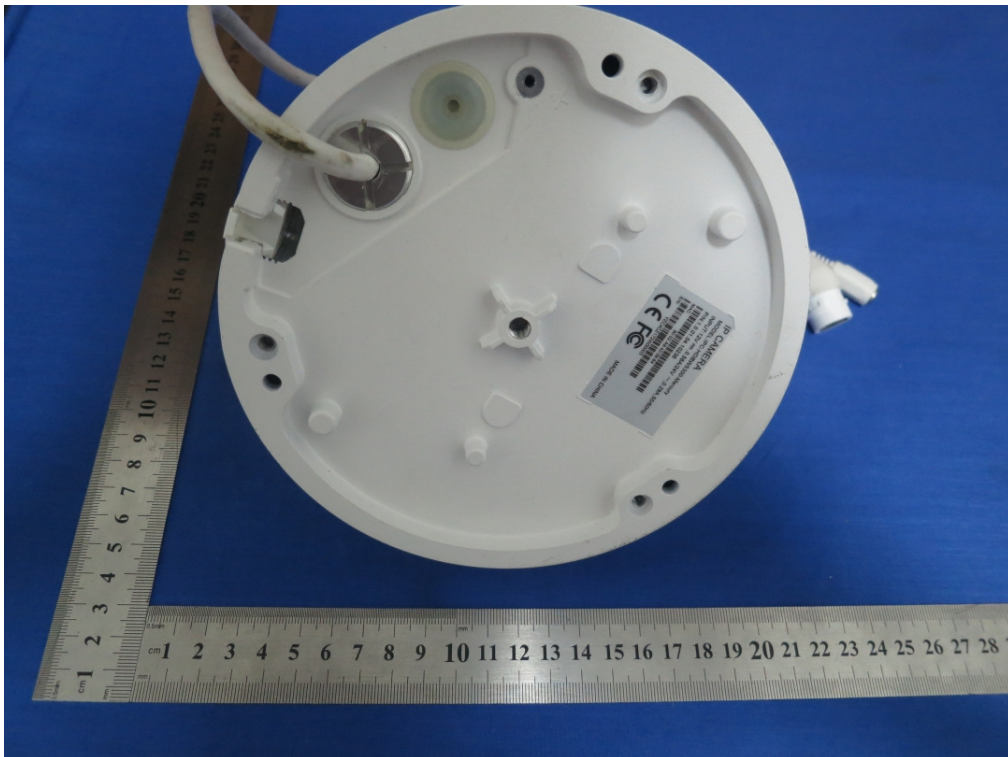
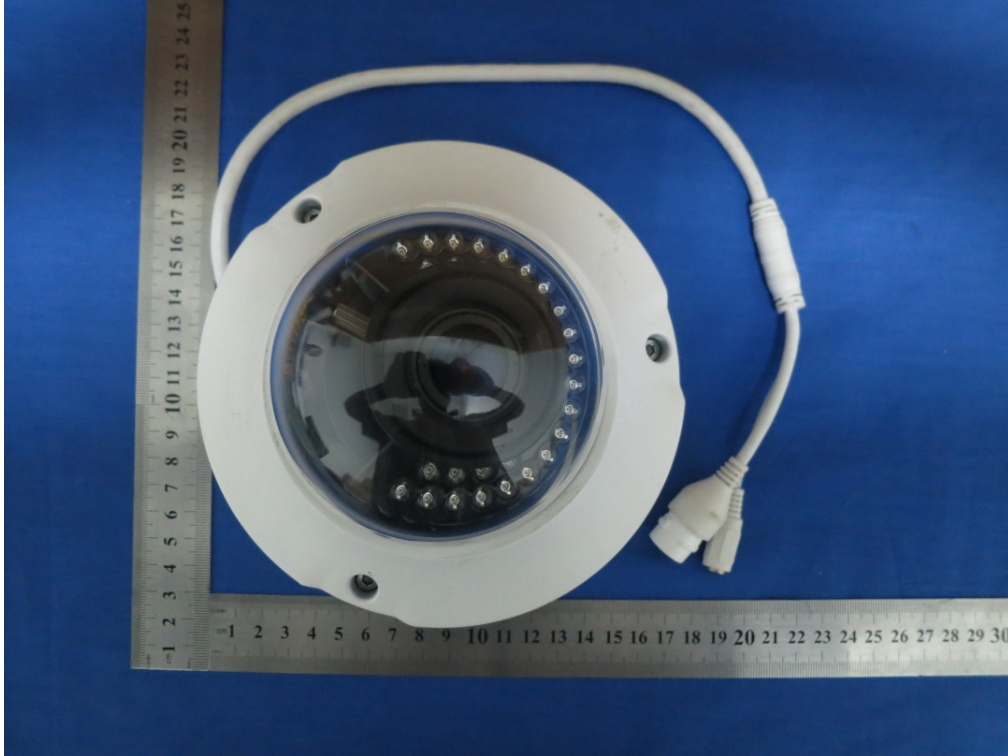
4.7	TABLE: Resistance to fire					P
Part	Manufacturer of material	Type of material	Thickness (mm)	Flammability class	Evidence	
PCB	--	--	--	1)	Pass	
Plastic enclosure	1)	1)	1)	1)	Pass	
Metal enclosure	--	1)	1)	--	Pass	
Supplementary information: 1) See appended table 1.5.1.						



5.3	TABLE: Fault condition tests					P
	Ambient temperature (°C)		See below			—
	Power source for EUT: Manufacturer, model/type, output rating		See appended table 1.5.1.			—
Component No.	Fault	Supply voltage (V)	Test time	Fuse #	Fuse current (A)	Observation
T1 Pin 5-6	Shorted	24Vac	10mins	--	--	Unit shut down, no damage, no hazards.
U5 Pin 4-5	Shorted	12Vdc	10mins	--	--	Unit shut down, no damage, no hazards.
Supplementary information:						



Photo(s)





Photo(s)



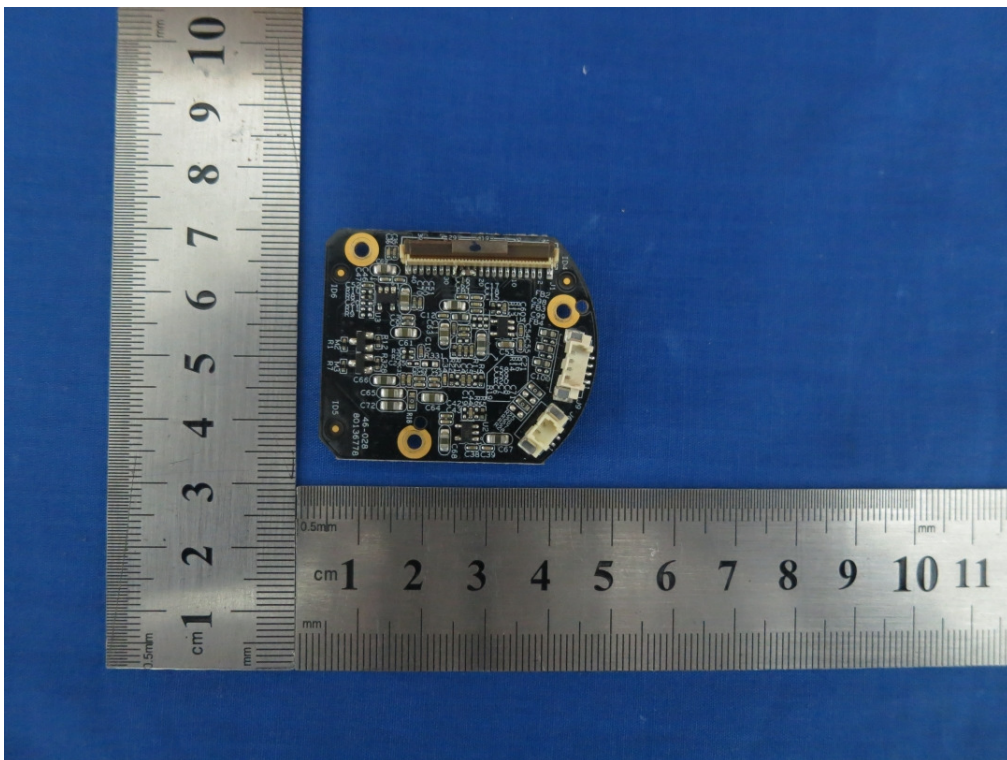
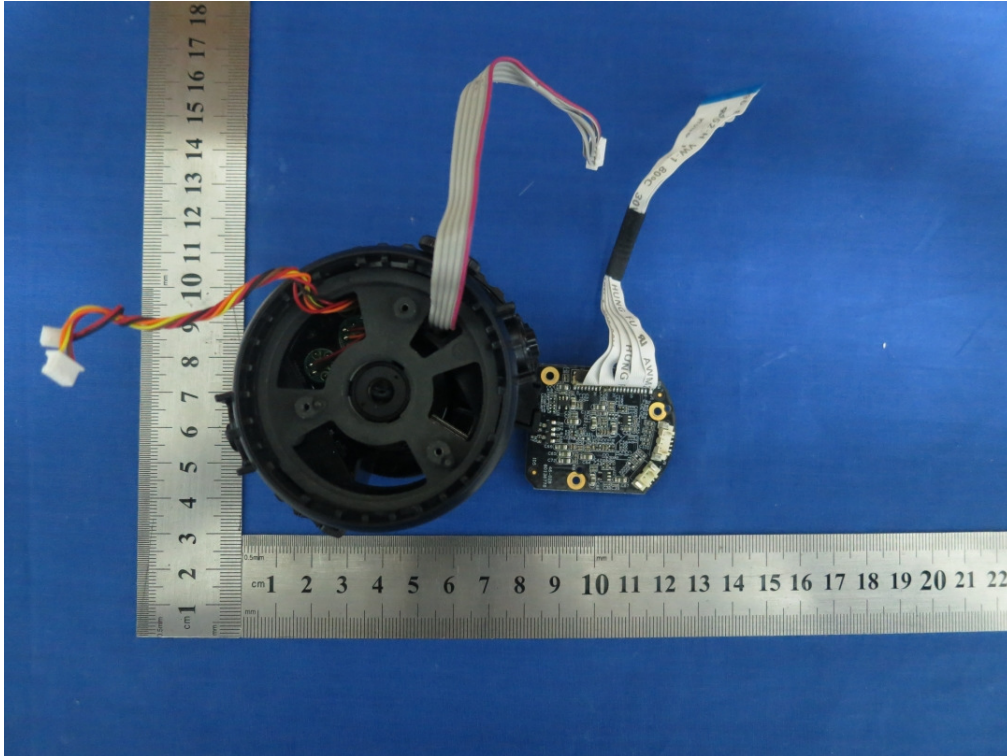


Photo(s)



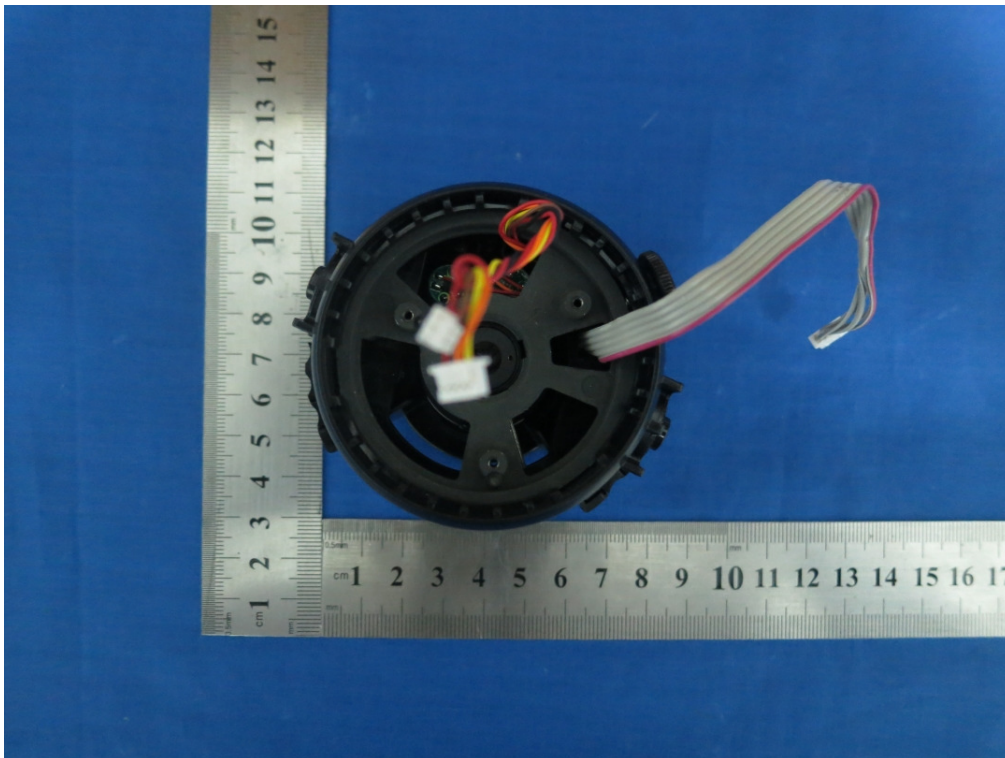
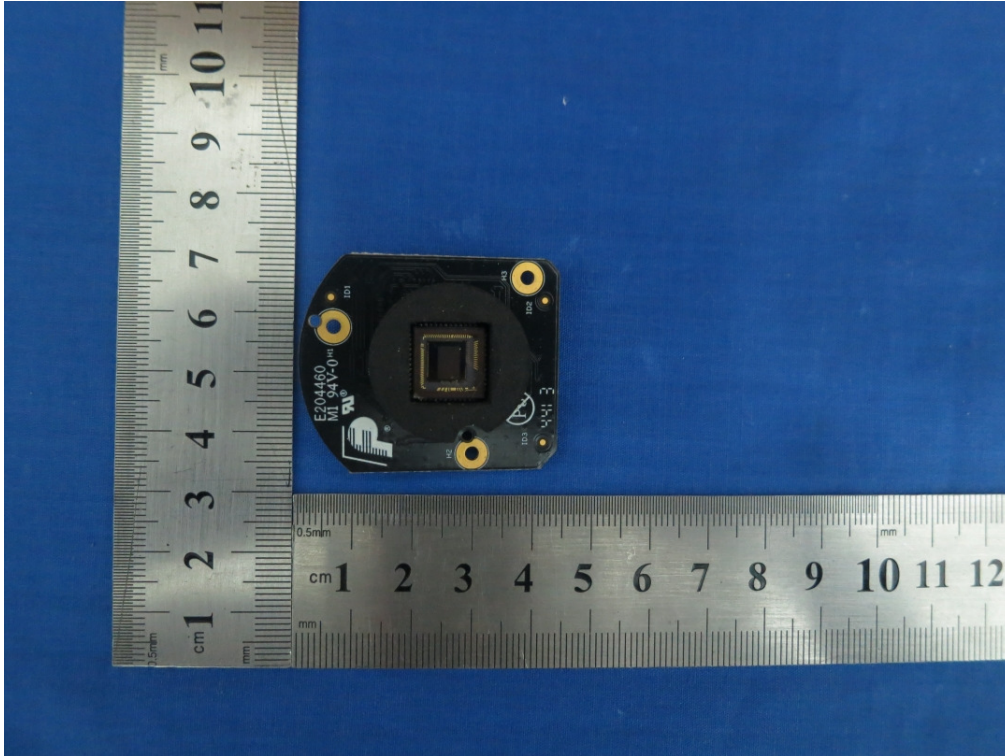


Photo(s)





Photo(s)



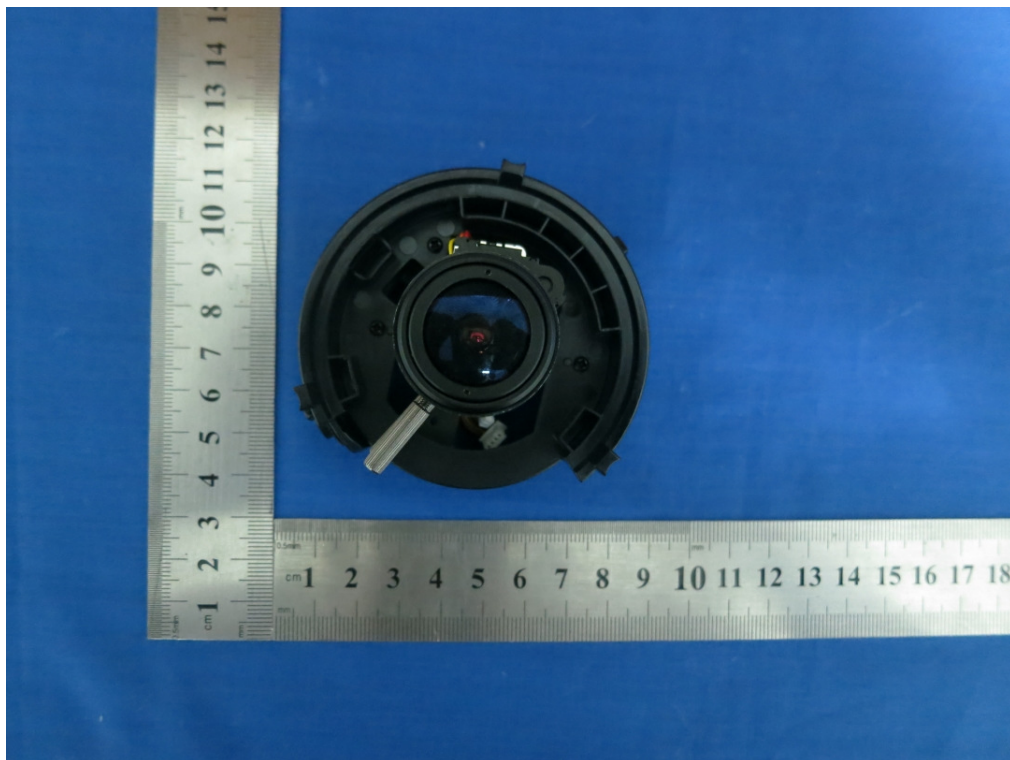


Photo(s)



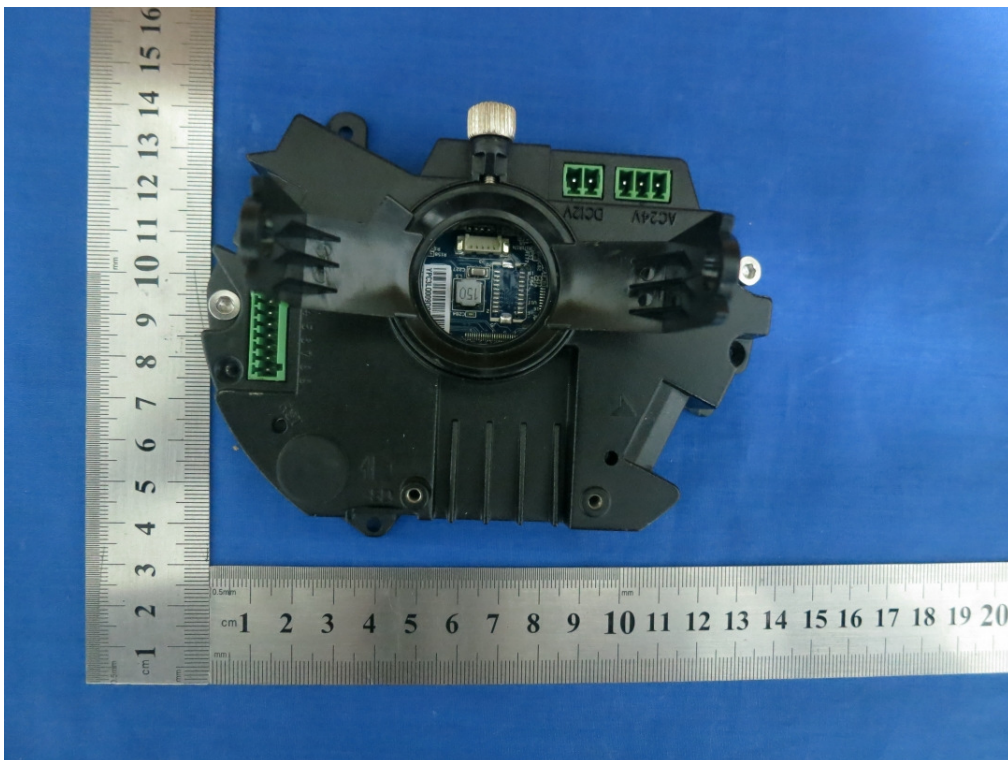
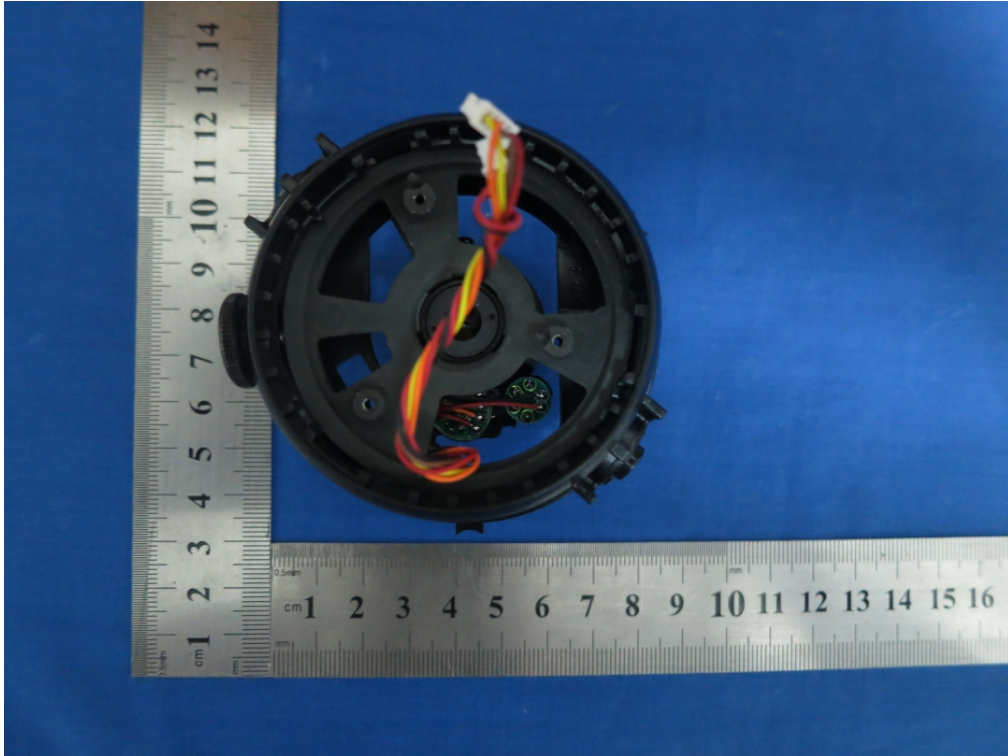


Photo(s)



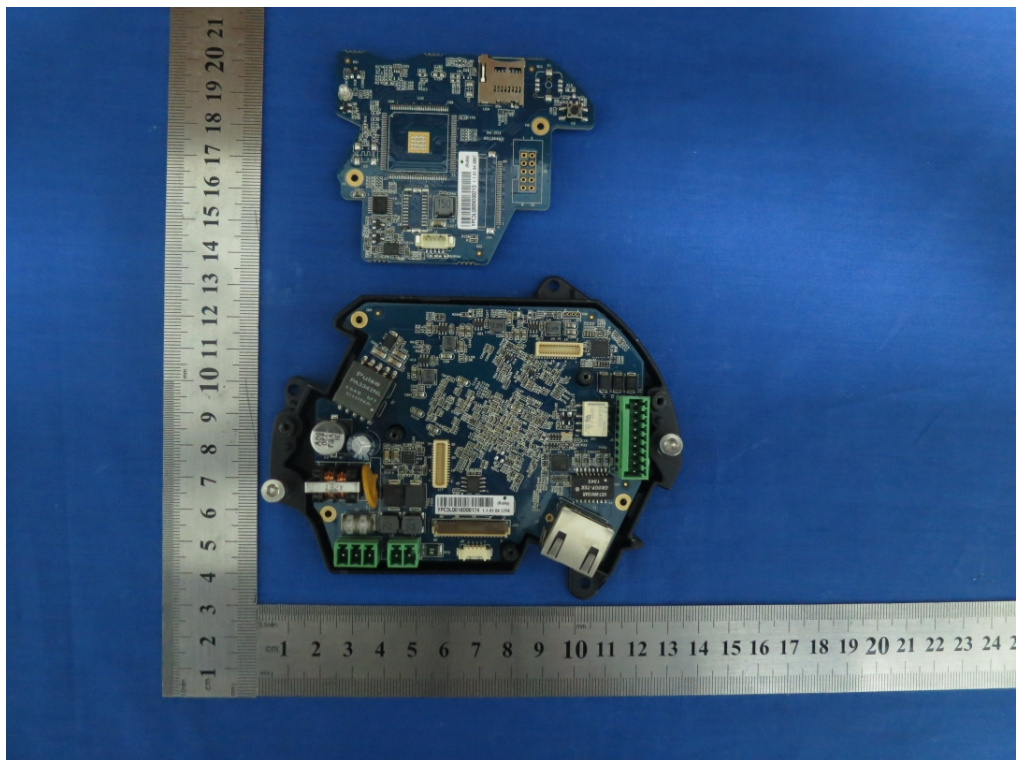
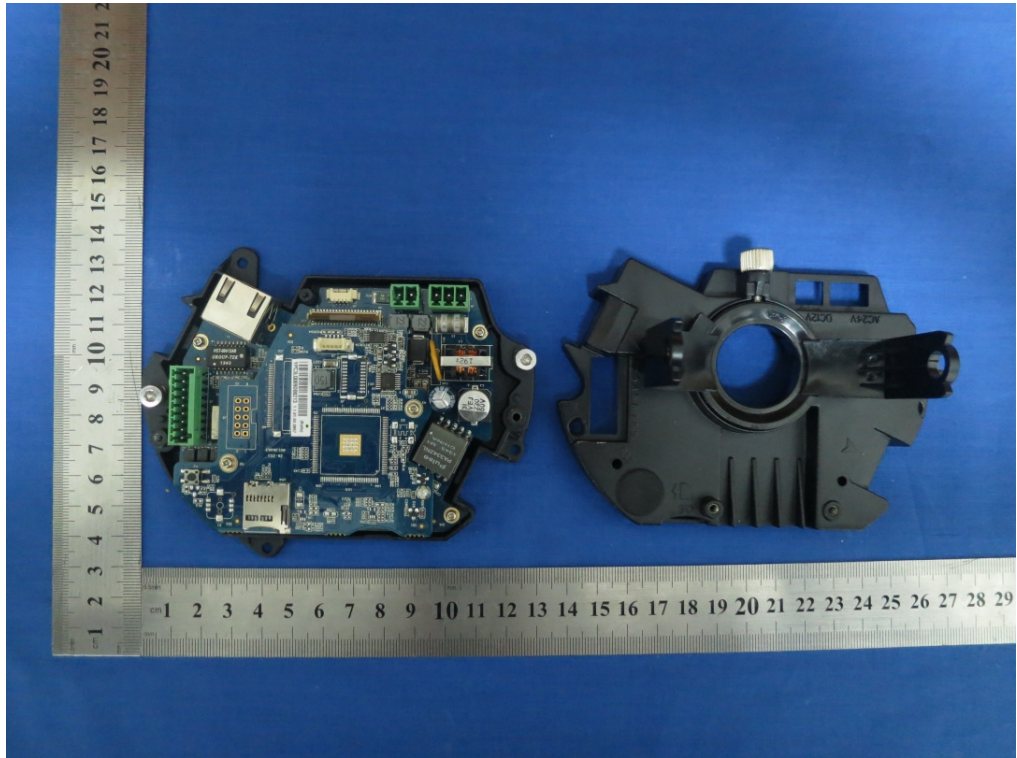


Photo(s)



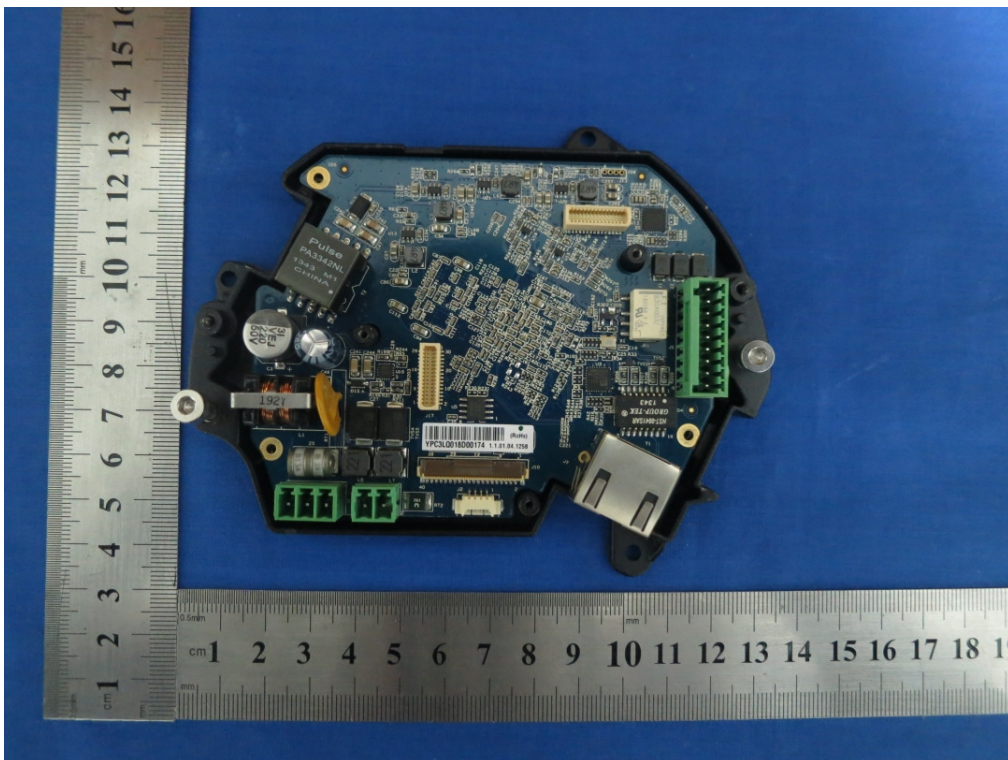
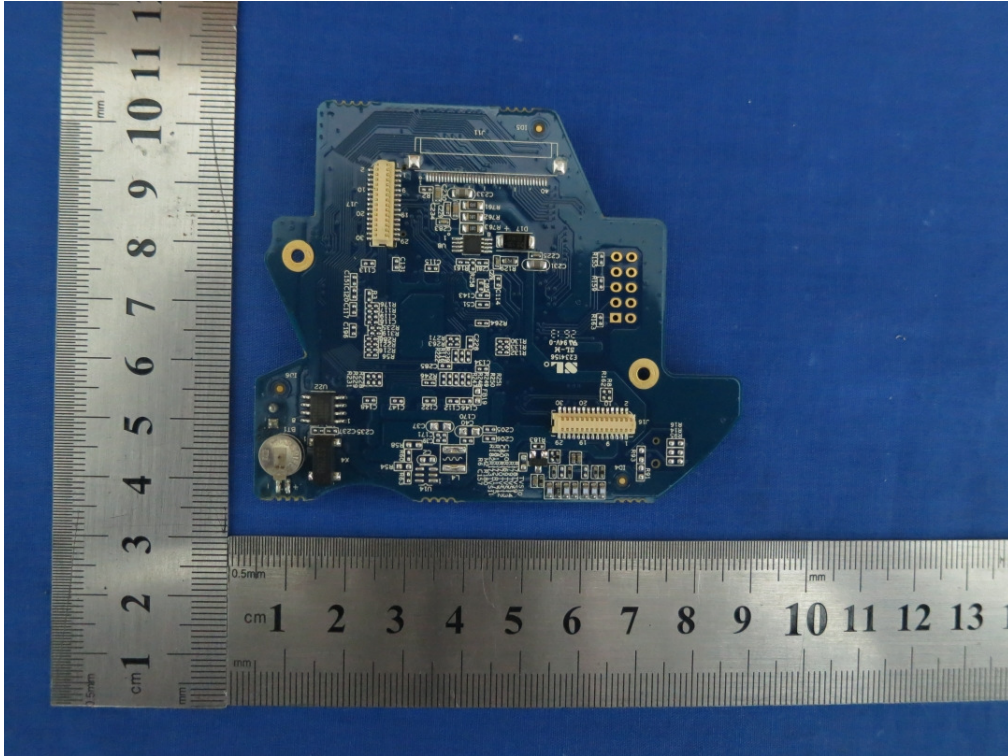


Photo(s)



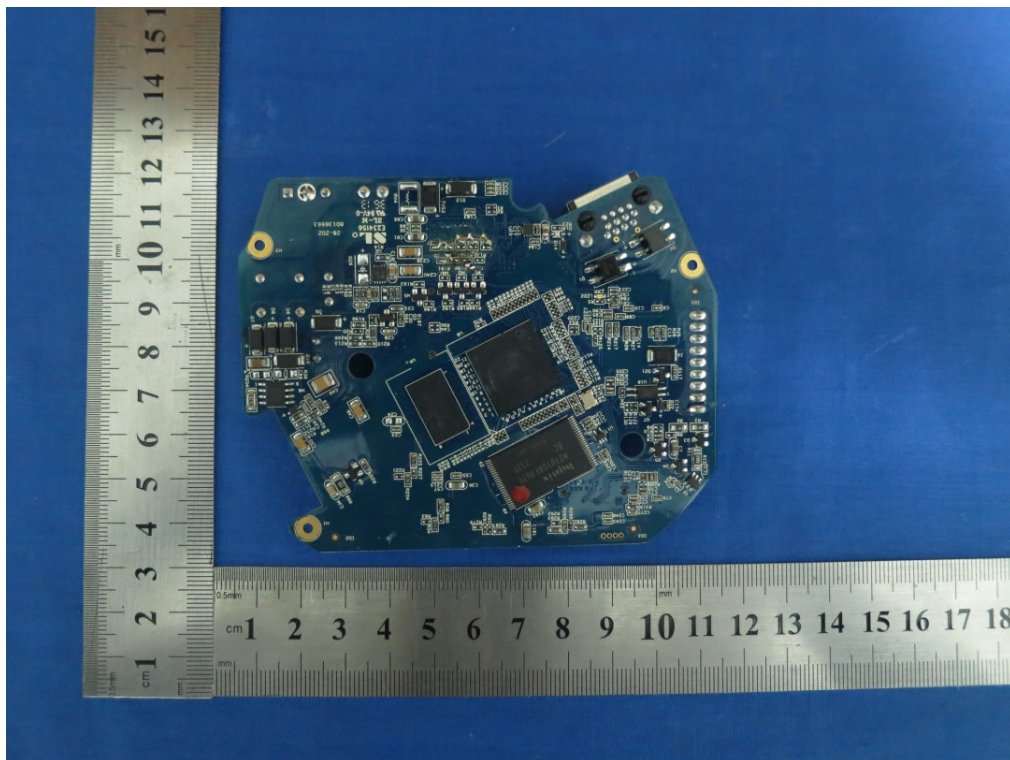
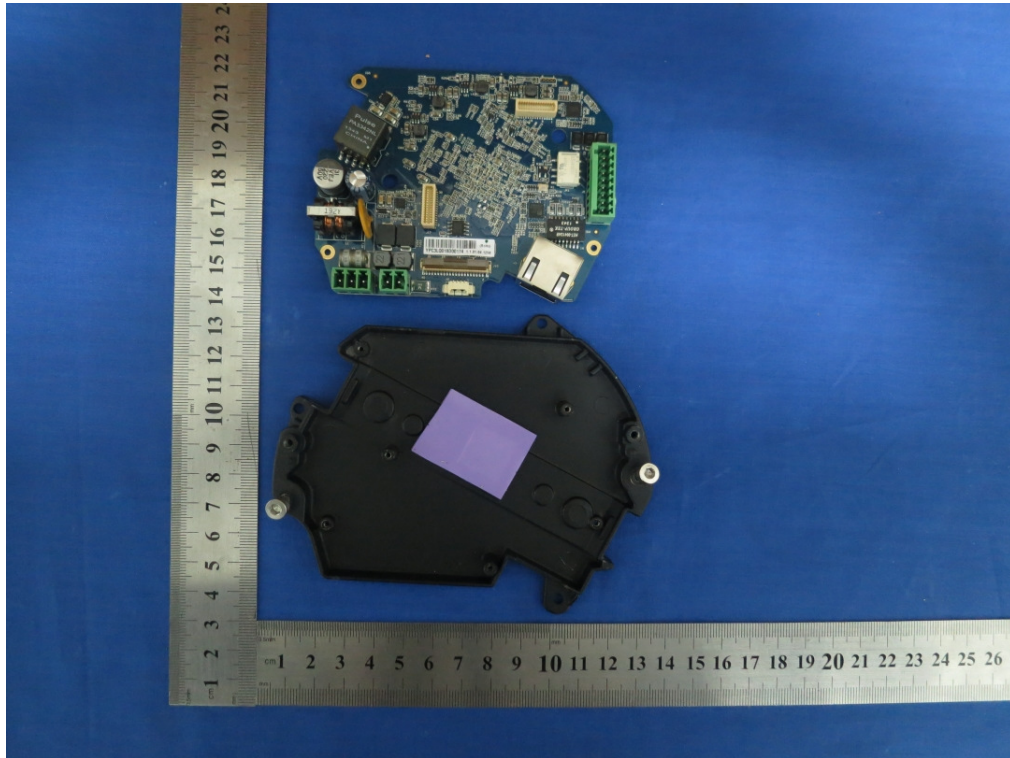


Photo(s)





Photo(s)





Photo(s)

Power Adapter(Model: ADS-12B-12 12012Gz)



Power Adapter(Model: HKA-A24150-230)





REMARKS:

1. The instructions specified by the standard have to be in official language of each country, however, only English is checked for this report. It is the applicant responsibility to provide instruction in each official language of the EU.
2. This report is submitted for the exclusive use of the client to whom it is addressed. Its significance is subject to the adequacy and representative character of the sample(s) and to the comprehensiveness of the tests, examinations or surveys made.
3. This report justified only the submitted samples exclusively and not necessarily implies that all other samples are also to be found in same result.
4. The CE marking may only be used if all relevant and effective EC directives are complied with.